

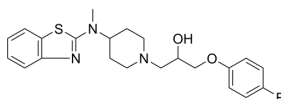
## Sabeluzole

Cat. No.: HY-105022  
CAS No.: 104383-17-7  
Batch No.: 428511  
Chemical Name: 1-Piperidineethanol, 4-(2-benzothiazolylmethylamino)- $\alpha$ -[(4-fluorophenoxy)methyl]-

### PHYSICAL AND CHEMICAL PROPERTIES

Molecular Formula: C<sub>22</sub>H<sub>26</sub>FN<sub>3</sub>O<sub>2</sub>S  
Molecular Weight: 415.52  
Storage: 4°C, protect from light  
\* In solvent : -80°C, 6 months; -20°C, 1 month (protect from light)

### Chemical Structure:



### ANALYTICAL DATA

Appearance: Off-white to light yellow (Solid)  
<sup>1</sup>H NMR Spectrum: Consistent with structure  
LCMS: Consistent with structure  
Purity (HPLC): 99.82%  
Conclusion: The product has been tested and complies with the given specifications.

**Caution: Product has not been fully validated for medical applications. For research use only.**

Tel: 609-228-6898

Fax: 609-228-5909

E-mail: tech@MedChemExpress.com

Address: 1 Deer Park Dr, Suite Q, Monmouth Junction, NJ 08852, USA