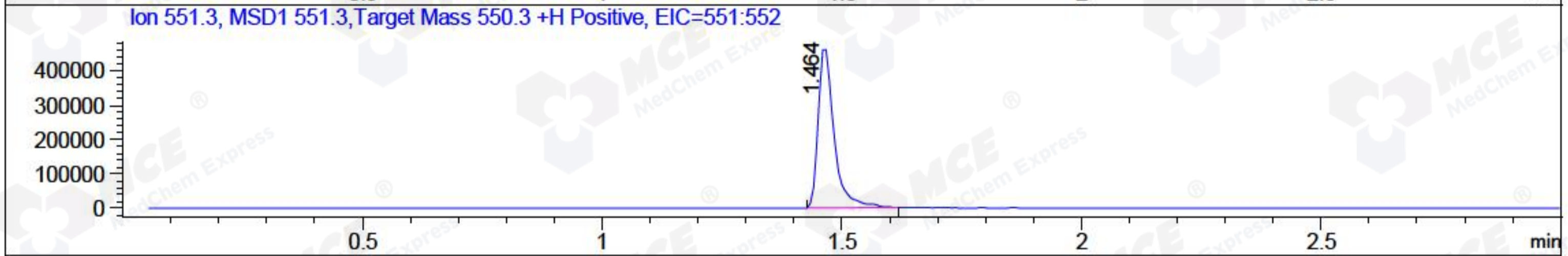
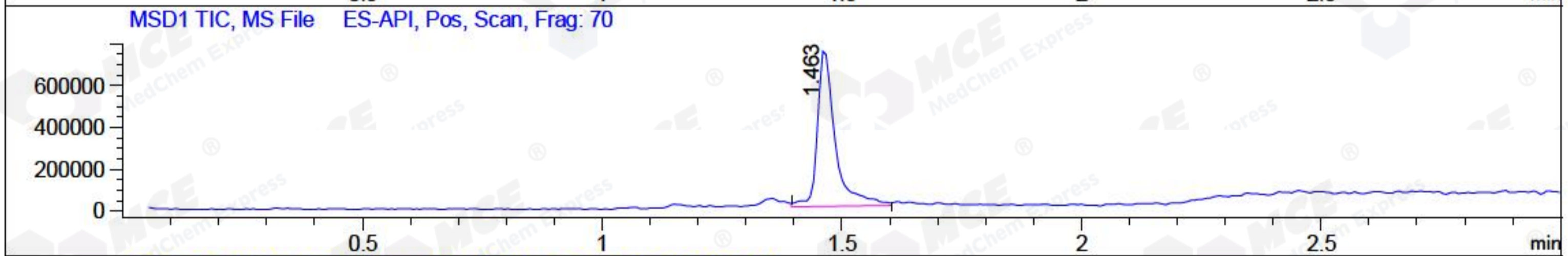
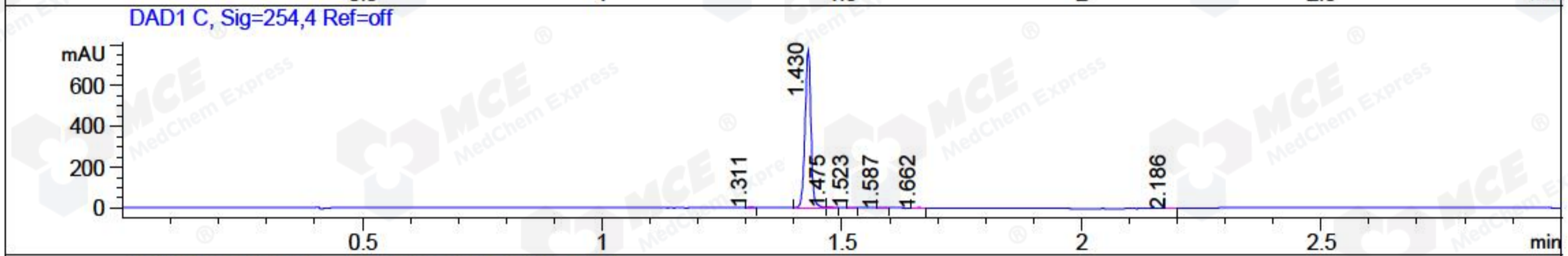
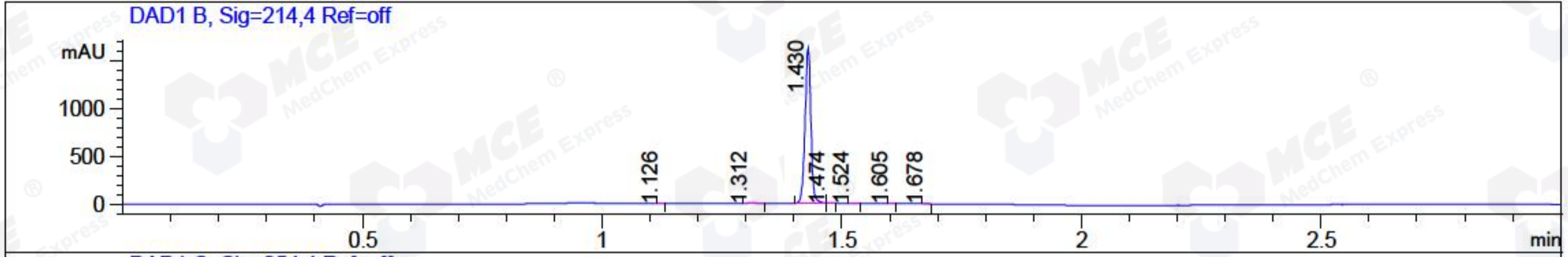


File ..1\DATA\2018\20180821\355\BIZ2018-821-CXL2.D Tgt Mass (CHM):  
 Injection Date : 21 Aug 18 2:36 pm +0800 Seq. Line : 3  
 Sample Name : BIZ2018-821-CXL2 Location : P1-F-05  
 Acq. Operator : LQ\_1052 Inj : 1  
 Spec. Reported : MS Integration Inj Volume : 1 ul  
 Acq. Method : D:\Chem32\1\data\2018\20180821\355\1-POS-3MIN-1.M  
 Analysis Method : D:\CHEM32\1\DATA\2018\20180821\355\1-POS-3MIN-1.M  
 Catalog No : HY-105117 Batch#32254 A-RP-314  
 Method Info : Mobile Phase: A: water(0.01%TFA) B:ACN(0.01%TFA)  
 Gradient: 5% to 95%B within 1.3 min  
 Flow Rate :1.8ml/min  
 Column :SunFire C18, 4.6\*50mm,3.5um A-RP-314  
 Oven Temperature : 45



Integration Results for DAD1 B, Sig=214,4 Ref=off

RetTim	Width	Area	Height	Area%	MS (+)
1.13	0.01	1.22	2.03	0.09	ND
1.31	0.02	11.72	9.15	0.84	780
1.43	0.01	1369.71	1629.07	98.56	551
1.47	0.01	3.83	4.87	0.28	551
1.52	0.01	0.90	1.11	0.06	551
1.61	0.01	1.59	2.46	0.11	551
1.68	0.01	0.81	1.13	0.06	141

Integration Results for DAD1 C, Sig=254,4 Ref=off

RetTim	Width	Area	Height	Area%	MS (+)
1.31	0.01	2.20	2.80	0.33	141
1.43	0.01	654.81	771.64	99.00	551
1.48	0.01	2.57	2.96	0.39	551
1.52	0.01	0.61	0.75	0.09	551
1.59	0.01	0.32	0.39	0.05	551
1.66	0.02	0.42	0.46	0.06	551
2.19	0.02	0.48	0.44	0.07	141

Integration Results for MSD1 TIC, MS File

RetTim	Width	Area	Height	Area%	MS (+)
1.46	0.04	1930502.13	759413.44	100.00	551

Ret. Time: 1.46

<<<< POSITIVE SPECTRA >>>>

ES-API Positive

