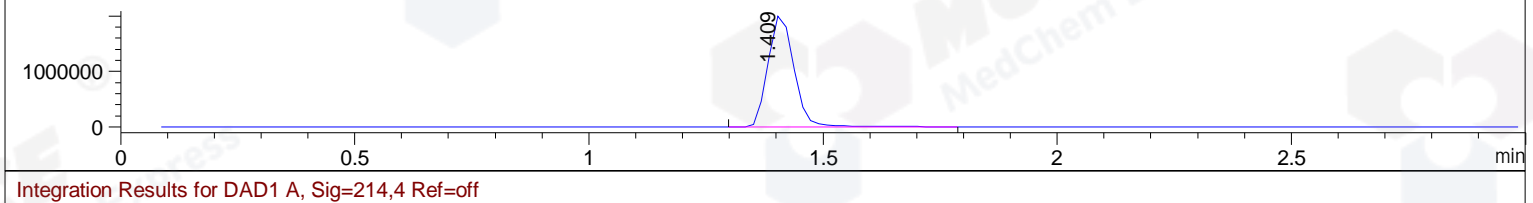
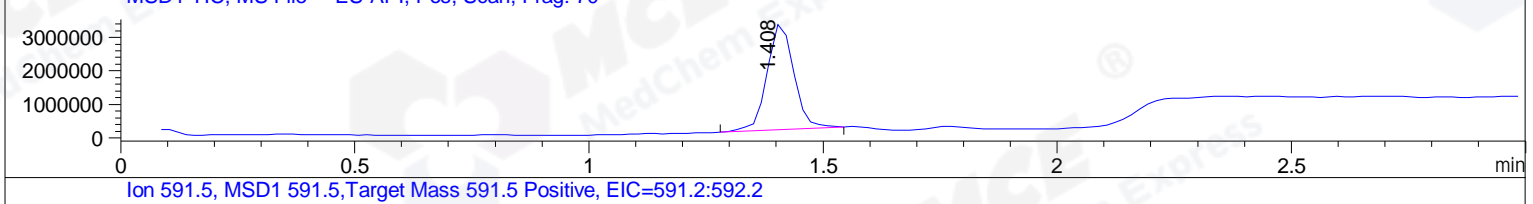
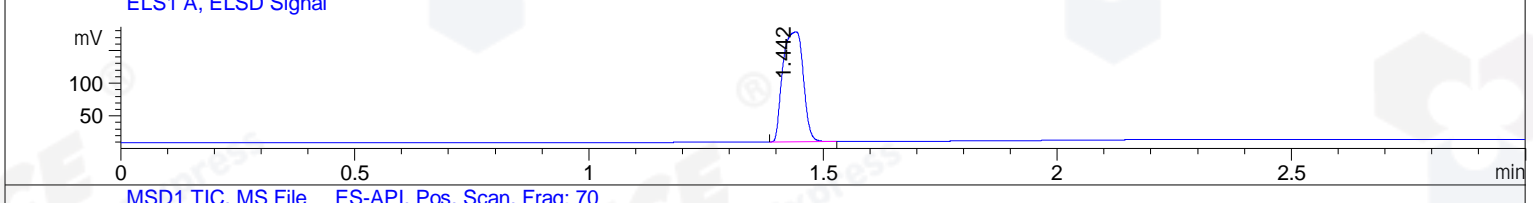
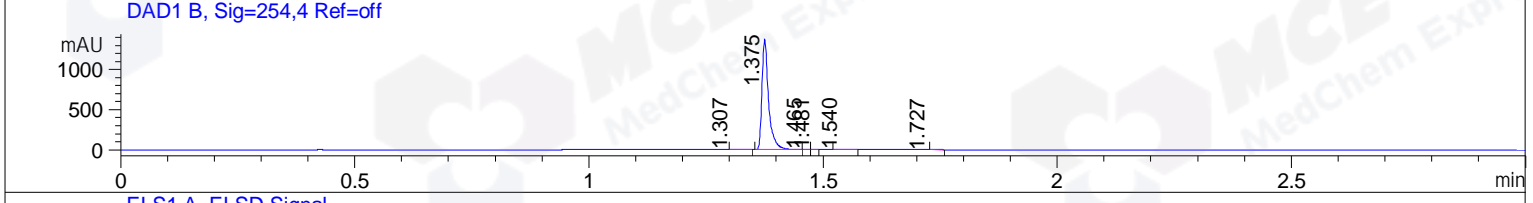
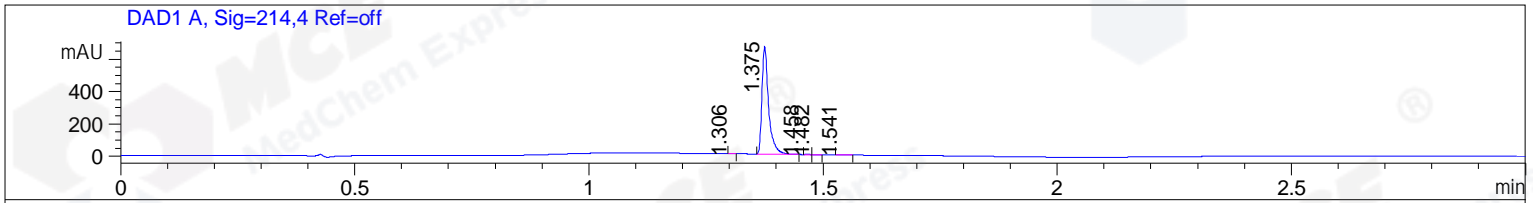


File ..ata\20170925\20170925 1\CPK2017-925-08553.D Tgt Mass (CHM):
 Injection Date : 25 Sep 17 6:21 pm +0800 Seq. Line : 103
 Sample Name : CPK2017-925-08553 Location : P2-B-06
 Acq. Operator : SYSTEM Inj : 1
 Spec. Reported : MS Integration Inj Volume : 1 ul
 Acq. Method : D:\LCMS03\Data\20170925\20170925 1\1-POS-3MIN.M
 Analysis Method : D:\LCMS03\Data\20170925\20170925 1\1-POS-3MIN.M
 Catalog No : HY-10514 Batch#08553
 Method Info : Mobile Phase: A: water(0.01%TFA) B:ACN(0.01%TFA)
 Gradient: 5% to 95%B within 1.3 min
 Flow Rate :1.8ml/min
 Column :SunFire C18, 4.6*50mm,3.5um A-RP-186
 Oven Temperature : 45C



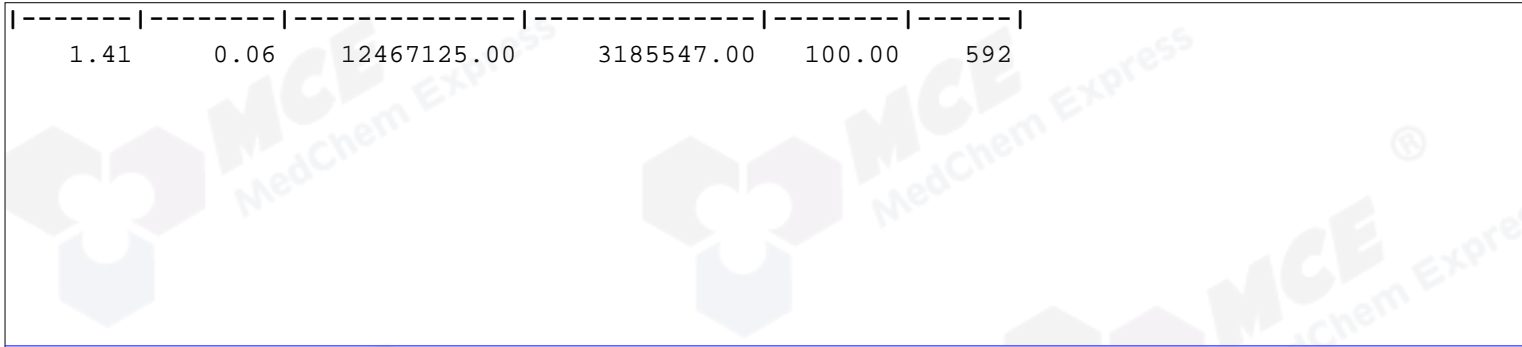
Integration Results for DAD1 A, Sig=214,4 Ref=off

RetTim	Width	Area	Height	Area%	MS (+)
1.31	0.01	0.74	1.24	0.11	466
1.38	0.02	656.78	666.94	99.33	592
1.46	0.01	0.70	0.18	0.11	592
1.48	0.01	0.66	0.82	0.10	592
1.54	0.02	2.34	2.60	0.35	614

Integration Results for DAD1 B, Sig=254,4 Ref=off

RetTim	Width	Area	Height	Area%	MS (+)
1.31	0.03	4.07	2.55	0.30	466
1.38	0.01	1350.43	1371.33	99.21	592
1.46	0.01	0.91	1.38	0.07	592
1.48	0.01	0.92	1.26	0.07	592
1.54	0.01	4.30	4.55	0.32	740
1.73	0.01	0.62	-0.11	0.05	233

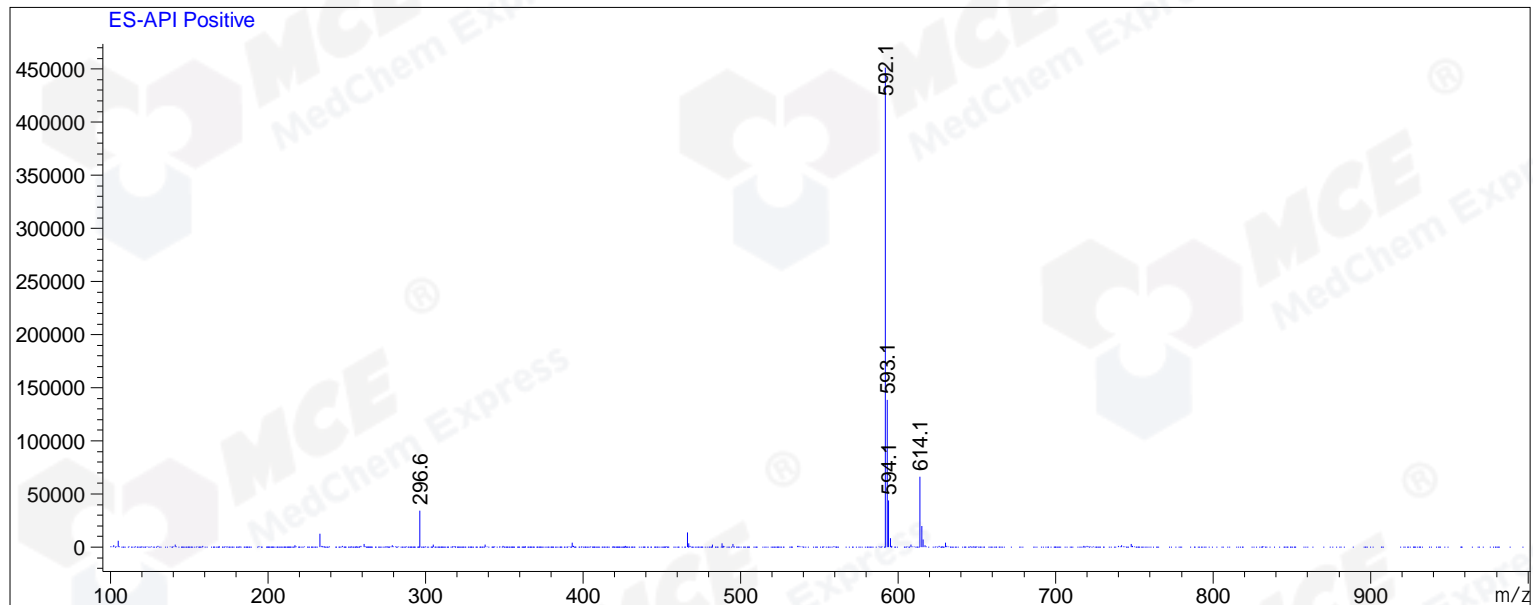
Integration Results for MSD1 TIC, MS File



RetTim	Width	Area	Height	Area%	MS (+)
--------	-------	------	--------	-------	--------

Ret. Time: 1.41

<<<< POSITIVE SPECTRA >>>>



*** End of Report ***