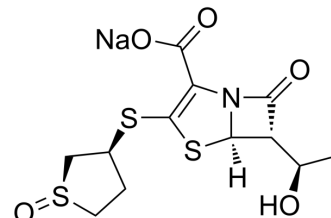


Sulopenem sodium

Cat. No.:	HY-105284A
CAS No.:	112294-81-2
Molecular Formula:	C ₁₂ H ₁₄ NNaO ₅ S ₃
Molecular Weight:	371.43
Target:	Bacterial; Antibiotic
Pathway:	Anti-infection
Storage:	Please store the product under the recommended conditions in the Certificate of Analysis.



BIOLOGICAL ACTIVITY

Description

Sulopenem (sodium)(CP-70429 (sodium)) is an orally active, parenteral penem antibiotic with broad-spectrum activities against Gram-positive and Gram-negative bacteria. Sulopenem has the potential for urinary tract infections and intra-abdominal infections treatment. Sulopenem is inactive against *Pseudomonas aeruginosa* and *Xanthomonas maltophilia*^[1] [2][3].

CUSTOMER VALIDATION

- Nat Microbiol. 2023 Mar;8(3):410-423.

See more customer validations on www.MedChemExpress.com

REFERENCES

- [1]. Karlowsky JA, et al. In Vitro Activity of Sulopenem, an Oral Penem, against Urinary Isolates of *Escherichia coli*. *Antimicrob Agents Chemother*. 2018;63(1):e01832-18. Published 2018 Dec 21.
- [2]. Nagashima M, et al. In vitro and in vivo activities of sulopenem compared with those of imipenem and cephalosporins. *Jpn J Antibiot*. 1996;49(4):303-323.
- [3]. Minamimura M, et al. In vitro antibacterial activity and beta-lactamase stability of CP-70,429 a new penem antibiotic. *Antimicrob Agents Chemother*. 1993;37(7):1547-1551.

Caution: Product has not been fully validated for medical applications. For research use only.

Tel: 609-228-6898

Fax: 609-228-5909

E-mail: tech@MedChemExpress.com

Address: 1 Deer Park Dr, Suite Q, Monmouth Junction, NJ 08852, USA