

## BW-180C

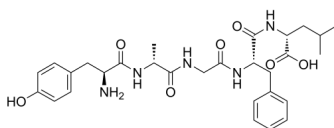
---

Cat. No.: HY-105343  
Batch No.: 261041  
CAS No.: 63631-40-3  
Molecular Formula: C<sub>29</sub>H<sub>39</sub>N<sub>5</sub>O<sub>7</sub>

### ANALYTICAL DATA

Theoretical: C(-), H(-), N(-), Peptide Content(≥60.0%)  
Result: C(50.92%), H(5.74%), N(9.86%), Peptide Content(80.29%)

Chemical Structure:



**Caution: Product has not been fully validated for medical applications. For research use only.**

Tel: 609-228-6898

Fax: 609-228-5909

E-mail: [tech@MedChemExpress.com](mailto:tech@MedChemExpress.com)

Address: 1 Deer Park Dr, Suite Q, Monmouth Junction, NJ 08852, USA