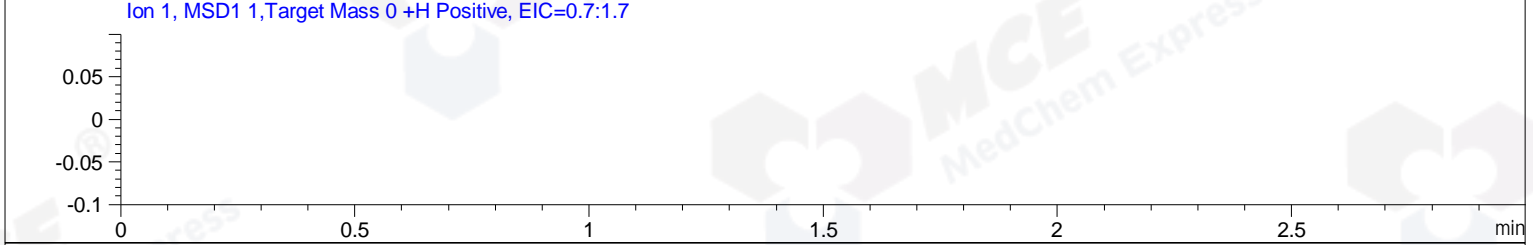
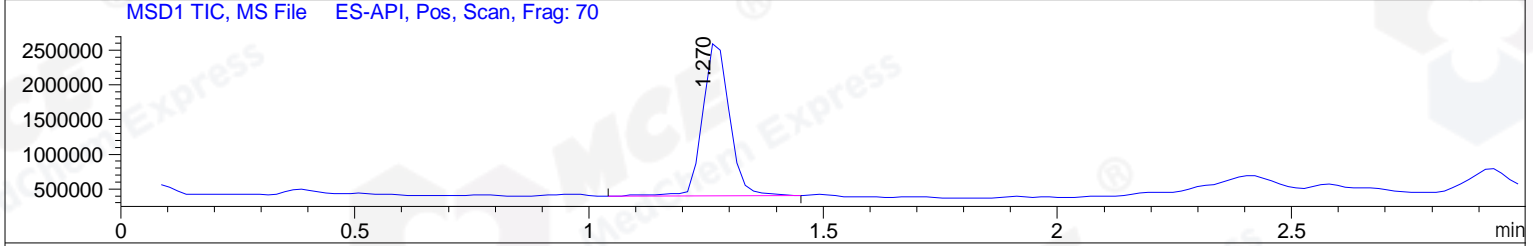
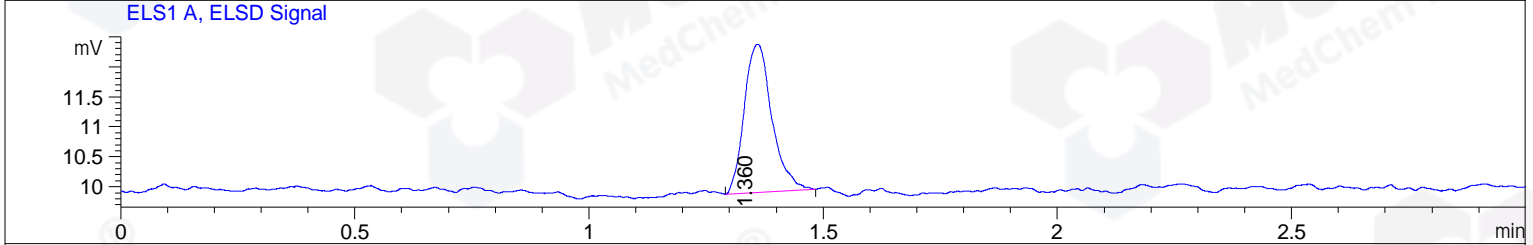
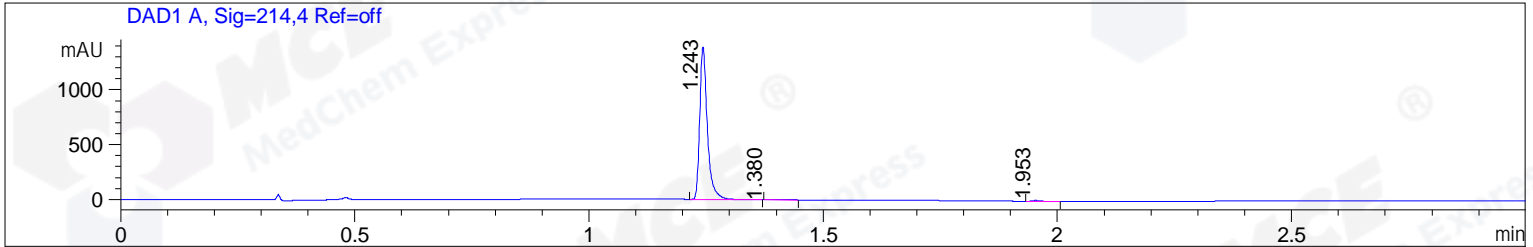


File ..03\Data\20190628\20190628 1\KY6849-003-2A.D Tgt Mass (CHM):
 Injection Date : 28 Jun 19 11:44 am +0800 Seq. Line : 5
 Sample Name : KY6849-003-2A Location : P1-C-10
 Acq. Operator : SYSTEM Inj : 1
 Spec. Reported : MS Integration Inj Volume : 4 ul
 Acq. Method : D:\LCMS03\Data\20190628\20190628 1\1-POS-3MIN.M
 Analysis Method : D:\LCMS03\Data\20190628\20190628 1\1-POS-3MIN.M
 Catalog No : HY-105545A Batch#43077
 Method Info : Mobile Phase: A: water(0.01%TFA) B:ACN(0.01%TFA)
 Gradient: 5% to 95%B within 1.3 min
 Flow Rate :1.8ml/min
 Column :SunFire C18, 4.6*50mm,3.5um A-RP-446
 Oven Temperature : 45C



Integration Results for DAD1 A, Sig=214,4 Ref=off

RetTim	Width	Area	Height	Area%	MS (+)
1.24	0.02	1567.94	1385.21	99.18	363
1.38	0.09	1.93	0.26	0.12	145
1.95	0.02	11.08	8.26	0.70	145

Integration Results for ELS1 A, ELSD Signal

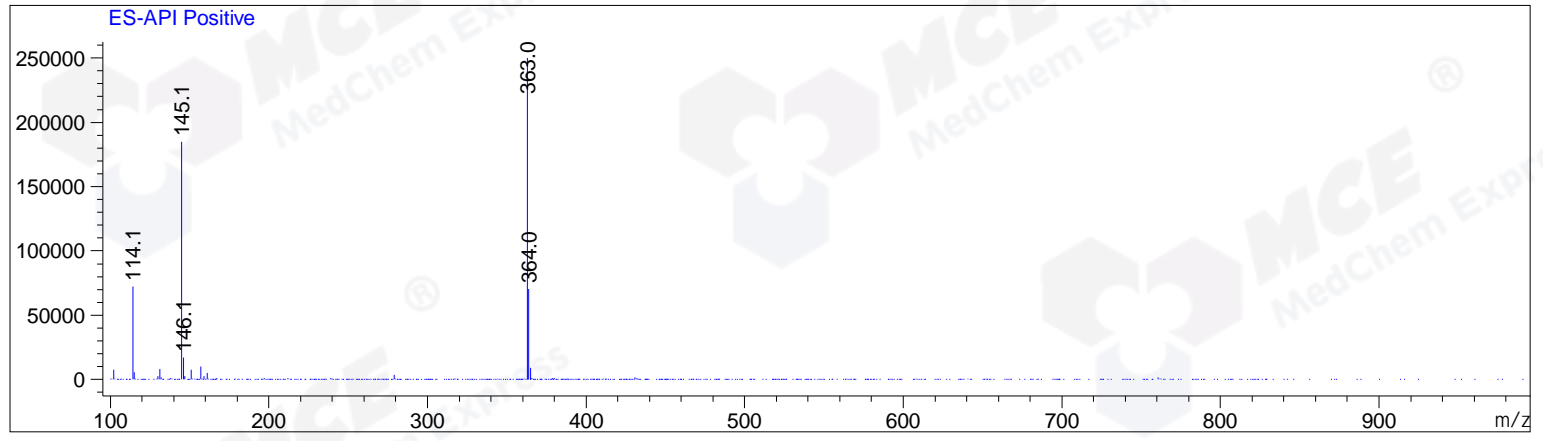
RetTim	Width	Area	Height	Area%	MS (+)
1.36	0.06	10.14	2.47	100.00	145

Integration Results for MSD1 TIC, MS File

RetTim	Width	Area	Height	Area%	MS (+)
1.27	0.06	8872028.00	2270117.25	100.00	363

Ret. Time: 1.27

<<<< POSITIVE SPECTRA >>>>



*** End of Report ***