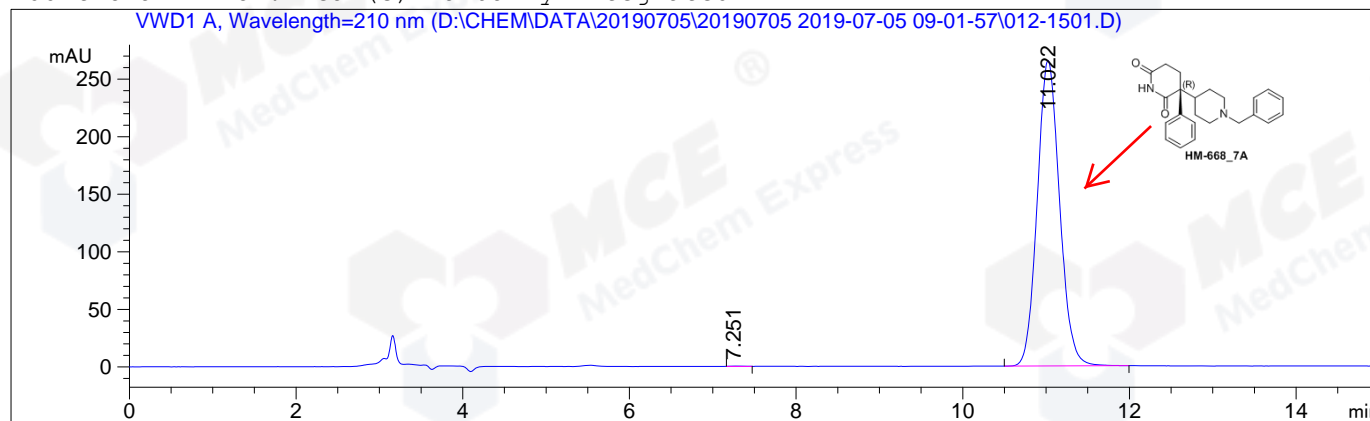


=====
Acq. Operator : WZH Seq. Line : 15
Acq. Instrument : HPLC-04 Location : Vial 12
Injection Date : 7/5/2019 3:50:14 PM Inj : 1
Inj Volume : 5.0 µl
Acq. Method : D:\CHEM\DATA\20190705\20190705 2019-07-05 09-01-57\AD,70B,210NM.M
Last changed : 7/5/2019 3:46:29 PM by WZH
(modified after loading)
Analysis Method : D:\CHEM\METHODS\AD,70B,210NM.M
Last changed : 6/24/2019 1:10:10 PM by WZH
Catalog No : HY-105545A Batch#43077
C-NP-41
=====

Additional Info : Peak(s) manually integrated



=====
Area Percent Report
=====

Sorted By : Signal
Multiplier: : 1.0000
Dilution: : 1.0000
Use Multiplier & Dilution Factor with ISTDs

Signal 1: VWD1 A, Wavelength=210 nm

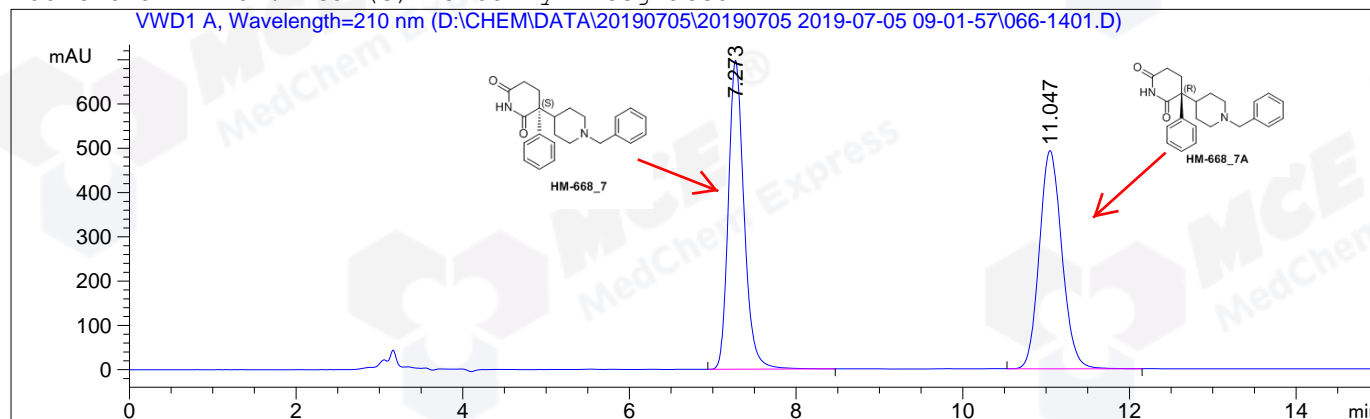
Peak #	RetTime [min]	Type	Width [min]	Area mAU*s	Height [mAU]	Area %
1	7.251	MM R	0.1749	2.08713	1.98938e-1	0.0423
2	11.022	BB	0.2884	4936.00488	265.36359	99.9577

Totals : 4938.09201 265.56252

=====
*** End of Report ***
=====

=====
Acq. Operator : WZH Seq. Line : 14
Acq. Instrument : HPLC-04 Location : Vial 66
Injection Date : 7/5/2019 3:33:23 PM Inj : 1
Inj Volume : 5.0 µl
Acq. Method : D:\CHEM\DATA\20190705\20190705 2019-07-05 09-01-57\AD,70B,210NM.M
Last changed : 7/5/2019 3:46:29 PM by WZH
(modified after loading)
Analysis Method : D:\CHEM\METHODS\AD,70B,210NM.M
Last changed : 6/24/2019 1:10:10 PM by WZH
Catalog No : HY-105545A Batch#43077
C-NP-41
=====

Additional Info : Peak(s) manually integrated



=====
Area Percent Report
=====

Sorted By : Signal
Multiplier: : 1.0000
Dilution: : 1.0000
Use Multiplier & Dilution Factor with ISTDs

Signal 1: VWD1 A, Wavelength=210 nm

Peak #	RetTime [min]	Type	Width [min]	Area mAU*s	Height [mAU]	Area %
1	7.273	BV	0.2006	9119.13477	697.29553	49.5666
2	11.047	VV	0.2925	9278.59375	492.71176	50.4334

Totals : 1.83977e4 1190.00729

=====
*** End of Report ***
=====