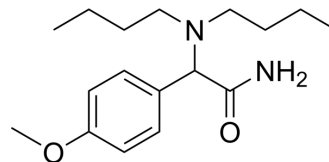


Ambucetamide

Cat. No.:	HY-105652
CAS No.:	519-88-0
Molecular Formula:	C ₁₇ H ₂₈ N ₂ O ₂
Molecular Weight:	292.42
Target:	Others
Pathway:	Others
Storage:	Please store the product under the recommended conditions in the Certificate of Analysis.



BIOLOGICAL ACTIVITY

Description	Ambucetamide is an antispasmodic agent. Ambucetamide alleviates menstrual pain ^{[1][2]} .								
In Vitro	Ambucetamide (6-120 µg/mL) inhibits the responses of the human myometrium to the menstrual stimulant ^[1] . Ambucetamide (12 µg/mL) has no definite effect on the responses of the guinea-pig uterus to vasopressin ^[1] . MCE has not independently confirmed the accuracy of these methods. They are for reference only.								
In Vivo	<p>Ambucetamide (0-30 mg/kg, jugular vein injection) decreases in the amplitude and frequency of contractions in rat-uterine^[2].</p> <p>Ambucetamide (1-10 mg/kg, femoral vein injection) reduces the tone of the uterus and increased the amplitude of contractions in dogs^[2].</p> <p>MCE has not independently confirmed the accuracy of these methods. They are for reference only.</p> <table border="1"> <tr> <td>Animal Model:</td> <td>Dogs^[2]</td> </tr> <tr> <td>Dosage:</td> <td>1-10 mg/kg</td> </tr> <tr> <td>Administration:</td> <td>Femoral vein injection</td> </tr> <tr> <td>Result:</td> <td>Showed a decrease in the amplitude of contractions at 10 mg/kg.</td> </tr> </table>	Animal Model:	Dogs ^[2]	Dosage:	1-10 mg/kg	Administration:	Femoral vein injection	Result:	Showed a decrease in the amplitude of contractions at 10 mg/kg.
Animal Model:	Dogs ^[2]								
Dosage:	1-10 mg/kg								
Administration:	Femoral vein injection								
Result:	Showed a decrease in the amplitude of contractions at 10 mg/kg.								

REFERENCES

[1]. V R PICKLES, et al. The effects of ambucetamide on human myometrial and other preparations, and its antagonism to the menstrual stimulant. Br J Pharmacol Chemother. 1960 Mar;15(1):128-30.

[2]. J B HOEKSTRA, et al. Studies with a uterine antispasmodic, ambucetamide. J Am Pharm Assoc Am Pharm Assoc. 1957 Sep;46(9):564-8.

Caution: Product has not been fully validated for medical applications. For research use only.

Tel: 609-228-6898

Fax: 609-228-5909

E-mail: tech@MedChemExpress.com

Address: 1 Deer Park Dr, Suite Q, Monmouth Junction, NJ 08852, USA