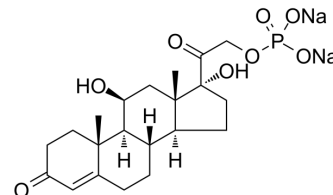


## Hydrocortisone phosphate sodium

|                    |   |
|--------------------|---|
| Cat. No.:          | HY-105656   |
| CAS No.:           | 6000-74-4   |
| Molecular Formula: | C <sub>21</sub> H <sub>29</sub> Na <sub>2</sub> O <sub>8</sub> P                          |
| Molecular Weight:  | 486.4   |
| Target:            | Others  |
| Pathway:           | Others  |
| Storage:           | Please store the product under the recommended conditions in the Certificate of Analysis. |



### BIOLOGICAL ACTIVITY

|             |   |  |
|-------------|---|--|
| Description | Hydrocortisone phosphate sodium is a soft steroid with low anti-inflammatory properties and a short duration of action. Hydrocortisone phosphate sodium can be used for the research for several ocular conditions and gastric ulcers <sup>[1]</sup> .      |  |
| In Vivo     | Hydrocortisone phosphate sodium (2.5 mg/kg, ip., daily) delays healing of established gastric ulcers induced by acetic acid in the rats <sup>[2]</sup> .<br>MCE has not independently confirmed the accuracy of these methods. They are for reference only. |  |
|             | Animal Model:   | Wistar rats <sup>[2]</sup>   |
|             | Dosage:   | 2.5 mg/kg  |
|             | Administration:   | 2.5 mg/kg, ip., daily  |
|             | Result:   | Resulted in a significant delay of ulcer healing induced by acetic acid. |

### REFERENCES

- [1]. Carlo Cagini, et al. Kinetics of hydrocortisone sodium phosphate penetration into the human aqueous humor after topical application. Int J Clin Pract. 2021 Dec;75(12):e14987.
- [2]. H Kuwayama, et al. Effects of sucralfate, lansoprazole, and cimetidine on the delayed healing by hydrocortisone sodium phosphate of chronic gastric ulcers in the rat. Am J Med. 1991 Aug 8;91(2A):15S-19S.

**Caution: Product has not been fully validated for medical applications. For research use only.**

Tel: 609-228-6898

Fax: 609-228-5909

E-mail: tech@MedChemExpress.com

Address: 1 Deer Park Dr, Suite Q, Monmouth Junction, NJ 08852, USA