

## PHA-543613 (dihydrochloride)

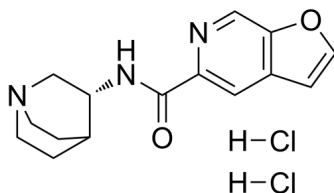
---

Cat. No.: HY-105670B  
Batch No.: 236523  
CAS No.: 478148-58-2  
Molecular Formula: C<sub>15</sub>H<sub>19</sub>Cl<sub>2</sub>N<sub>3</sub>O<sub>2</sub>

### ANALYTICAL DATA

Theoretical: C(52.34%)、H(5.56%)、N(12.21%)、20.60%  
Result: C(52.15%)、H(5.62%)、N(12.12%)、20.46%

Chemical Structure:



**Caution: Product has not been fully validated for medical applications. For research use only.**

Tel: 609-228-6898

Fax: 609-228-5909

E-mail: [tech@MedChemExpress.com](mailto:tech@MedChemExpress.com)

Address: 1 Deer Park Dr, Suite Q, Monmouth Junction, NJ 08852, USA