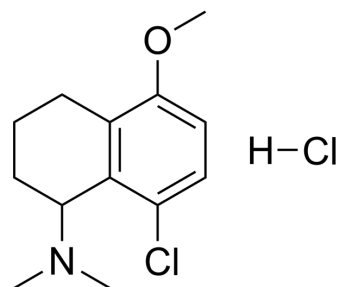


## Lometraline hydrochloride

Cat. No.:	HY-105772A
CAS No.:	30060-91-4
Molecular Formula:	C <sub>13</sub> H <sub>19</sub> Cl <sub>2</sub> NO
Molecular Weight:	276.2
Target:	Others
Pathway:	Others
Storage:	Please store the product under the recommended conditions in the Certificate of Analysis.



### BIOLOGICAL ACTIVITY

#### Description

Lometraline hydrochloride is an aminotetralin derivative and can be used for Parkinson's disease research<sup>[1]</sup>.

### REFERENCES

[1]. Reinhard Sarges, et al. Combination therapy for Parkinson's disease. Patent. US3991207.

**Caution: Product has not been fully validated for medical applications. For research use only.**

Tel: 609-228-6898

Fax: 609-228-5909

E-mail: tech@MedChemExpress.com

Address: 1 Deer Park Dr, Suite Q, Monmouth Junction, NJ 08852, USA