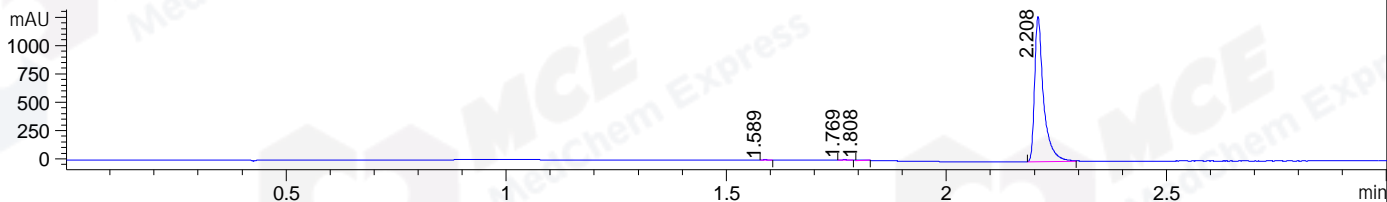
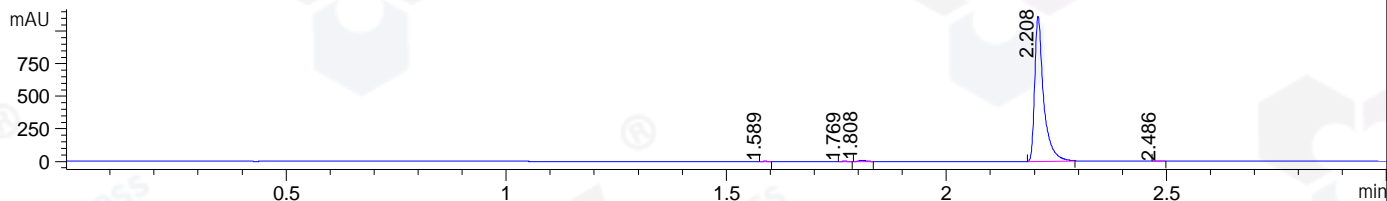


File ..1\DATA\2019\20190505\558\BIZ2019-430-CXL1.D Tgt Mass (CHM):
 Injection Date : 5 May 19 10:40 am +0800 Seq. Line : 10
 Sample Name : BIZ2019-430-CXL1 Location : P2-E-06
 Acq. Operator : LQ_1052 Inj : 1
 Spec. Reported : MS Integration Inj Volume : 1 ul
 Acq. Method : D:\Chem32\1\data\2019\20190505\558\1-POS-3MIN-1.M
 Analysis Method : D:\CHEM32\1\DATA\2019\20190505\558\1-POS-3MIN-1.M
 Catalog No : HY-105917 Batch#40810
 Method Info : Mobile Phase: A: water(0.01%TFA) B:ACN(0.01%TFA)
 Gradient: 5% to 95%B within 1.3 min
 Flow Rate :1.8ml/min
 Column :SunFire C18, 4.6*50mm,3.5um A-RP-322
 Oven Temperature : 45□

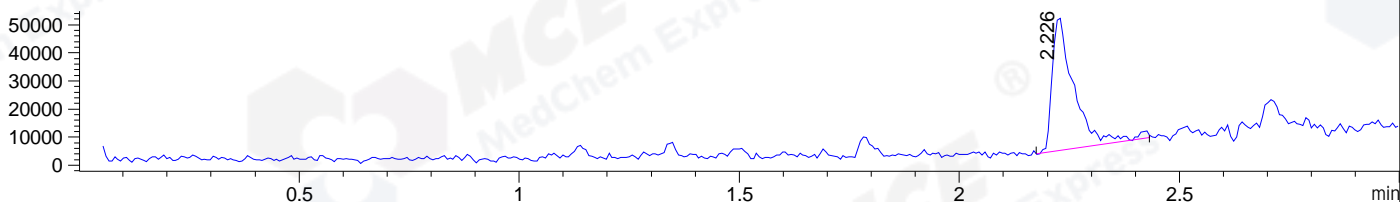
DAD1 B, Sig=214,4 Ref=off



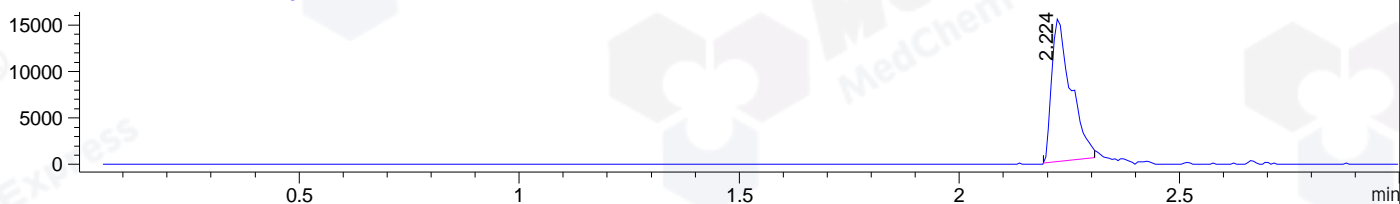
DAD1 C, Sig=254,4 Ref=off



MSD1 TIC, MS File ES-API, Pos, Scan, Frag: 70



Ion 495, MSD1 495, Target Mass 494 +H Positive, EIC=494.7:495.7



Integration Results for DAD1 B, Sig=214,4 Ref=off

RetTim	Width	Area	Height	Area%	MS (+)
1.59	0.02	2.37	2.49	0.13	ND
1.77	0.02	5.99	6.37	0.33	280
1.81	0.02	4.92	5.01	0.27	ND
2.21	0.02	1817.69	1281.55	99.27	495

Integration Results for DAD1 C, Sig=254,4 Ref=off

RetTim	Width	Area	Height	Area%	MS (+)
1.59	0.02	1.21	1.31	0.08	ND
1.77	0.02	2.06	2.26	0.13	280
1.81	0.02	12.04	10.58	0.75	ND
2.21	0.02	1582.74	1117.15	99.00	495
2.49	0.02	0.71	0.63	0.04	ND

Integration Results for MSD1 TIC, MS File

RetTim	Width	Area	Height	Area%	MS (+)
--------	-------	------	--------	-------	--------

2.23 0.05 162829.39 47602.98 100.00 495

Ret. Time: 2.23

<<<< POSITIVE SPECTRA >>>>

ES-API Positive

