

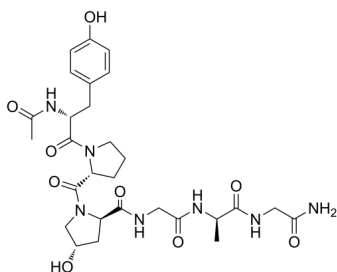
Rotigaptide

Cat. No.: HY-106225
Batch No.: 319833
CAS No.: 355151-12-1
Molecular Formula: C₂₈H₃₉N₇O₉

ANALYTICAL DATA

Theoretical: C(-), H(-), N(-), Peptide Content(≥60.0%)
Result: C(50.65%), H(6.46%), N(15.24%), Peptide Content(96.0%)

Chemical Structure:



Caution: Product has not been fully validated for medical applications. For research use only.

Tel: 609-228-6898

Fax: 609-228-5909

E-mail: tech@MedChemExpress.com

Address: 1 Deer Park Dr, Suite Q, Monmouth Junction, NJ 08852, USA