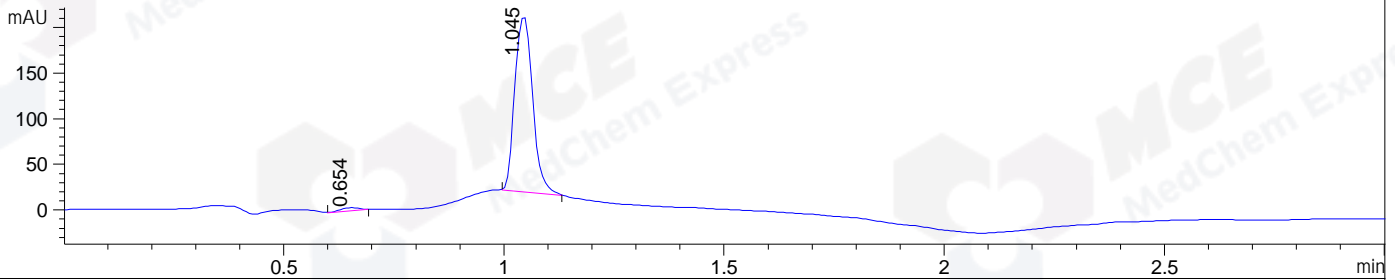


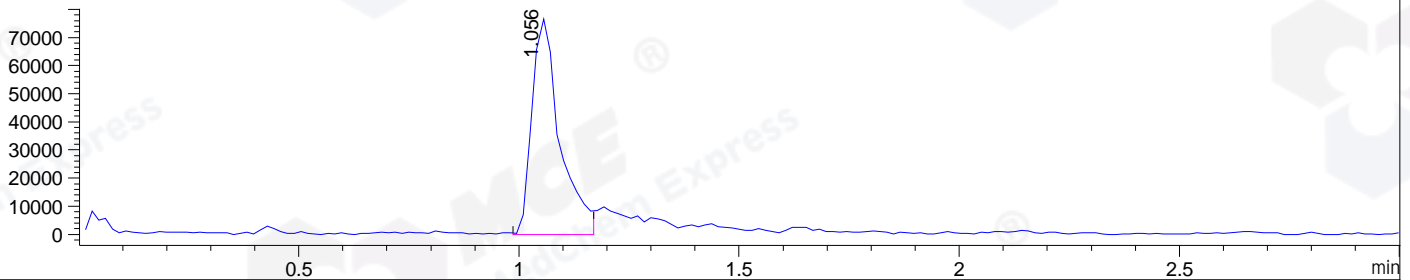
File ..DATA\2020\20200902\1095\BIZ2020-901-WLQ2-.D Tgt Mass (CHM):

Injection Date : 2 Sep 20 1:46 pm +0800 Seq. Line : 17  
 Sample Name : BIZ2020-901-WLQ2 Location : P1-A-06  
 Acq. Operator : zyj\_1547 Inj : 1  
 Spec. Reported : MS Integration Inj Volume : 2 ul  
 Acq. Method : D:\Chem32\1\data\2020\20200902\1095\1-POS-3MIN-1(500-2000).M  
 Analysis Method : D:\CHEM32\1\DATA\2020\20200902\1095\1-POS-3MIN-1(500-2000).M  
 Catalog No : HY-106262B  
 Method Info : Mobile Phase: A: water(0.01%TFA) B:ACN(0.01%TFA)  
 Gradient: 5% to 95%B within 1.3 min  
 Flow Rate :1.8ml/min  
 Column :SunFire C18, 4.6\*50mm,3.5um A-RP-314  
 Oven Temperature : 45C  
 Postive,MS:500-2000

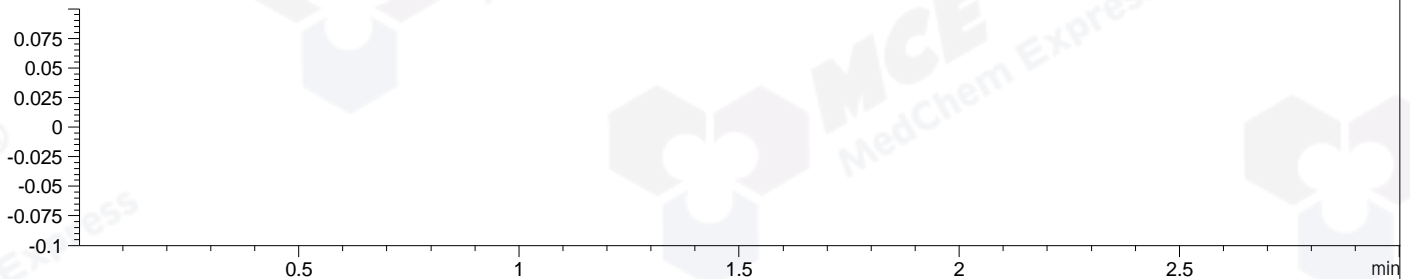
DAD1 B, Sig=214,4 Ref=off



MSD1 TIC, MS File ES-API, Pos, Scan, Frag: 70



Ion 2881, MSD1 2881, Target Mass 2880 +H Positive, EIC=2880.7:2881.7



Integration Results for DAD1 B, Sig=214,4 Ref=off

RetTim	Width	Area	Height	Area%	MS (+)
0.65	0.05	10.45	3.56	1.89	ND
1.04	0.05	541.42	194.11	98.11	721

Integration Results for MSD1 TIC, MS File

RetTim	Width	Area	Height	Area%	MS (+)
1.06	0.06	334330.47	76483.38	100.00	721

Ret. Time: 1.06

<<<< POSITIVE SPECTRA >>>>

