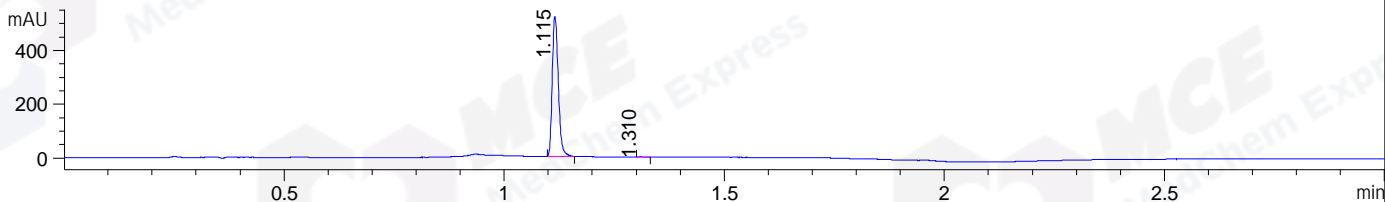
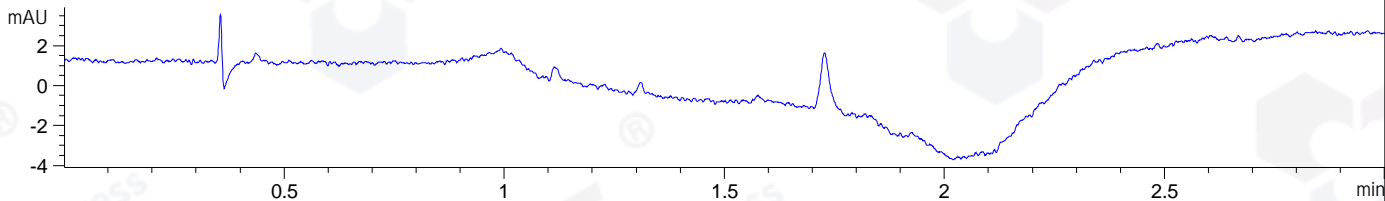


File ..1\DATA\2019\20190603\588\BIZ2019-603-WYQ5.D Tgt Mass (CHM):  
 Injection Date : 3 Jun 19 4:38 pm +0800 Seq. Line : 11  
 Sample Name : BIZ2019-603-WYQ5 Location : P1-D-04  
 Acq. Operator : ZJ\_1432 Inj : 1  
 Spec. Reported : MS Integration Inj Volume : 1 ul  
 Acq. Method : D:\Chem32\1\data\2019\20190603\588\1-POS-3MIN.M  
 Analysis Method : D:\CHEM32\1\DATA\2019\20190603\588\1-POS-3MIN.M  
 Catalog No : HY-106268A Batch#42025  
 Method Info : Mobile Phase: A: water(0.01%TFA) B:ACN(0.01%TFA)  
 Gradient: 5% to 95%B within 1.3 min  
 Flow Rate :1.8ml/min  
 Column :SunFire C18, 4.6\*50mm,3.5um A-RP-433  
 Oven Temperature : 45

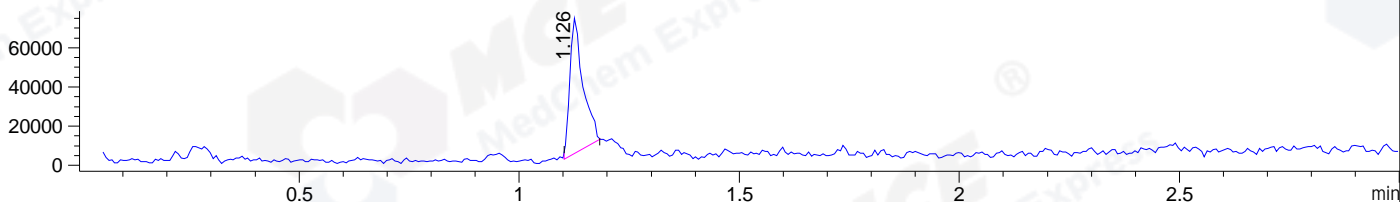
DAD1 B, Sig=214,4 Ref=off



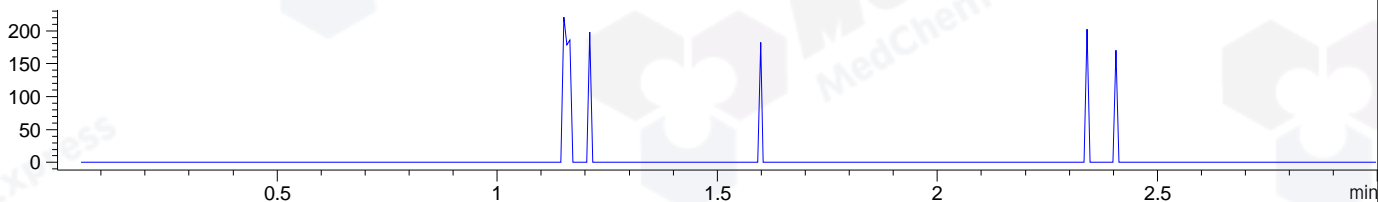
DAD1 C, Sig=254,4 Ref=off



MSD1 TIC, MS File ES-API, Pos, Scan, Frag: 70



Ion 786.4, MSD1 786.4, Target Mass 785.4 +H Positive, EIC=786.1:787.1



## Integration Results for DAD1 B, Sig=214,4 Ref=off

RetTim	Width	Area	Height	Area%	MS (+)
1.12	0.01	497.93	521.50	99.68	726
1.31	0.02	1.60	1.60	0.32	ND

## Integration Results for DAD1 C, Sig=254,4 Ref=off

RetTim	Width	Area	Height	Area%	MS (+)
--------	-------	------	--------	-------	--------

## Integration Results for MSD1 TIC, MS File

RetTim	Width	Area	Height	Area%	MS (+)
1.13	0.03	141328.95	70428.15	100.00	726

Ret. Time: 1.13

<<<< POSITIVE SPECTRA >>>>

ES-API Positive

