

## GW3965 (hydrochloride)

---

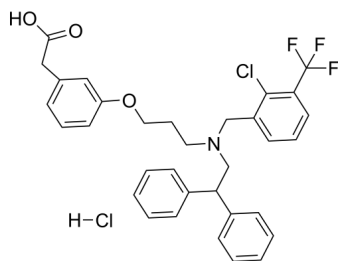
Cat. No.: HY-10627A  
Batch No.: 96275  
CAS No.: 405911-17-3  
Molecular Formula:  $C_{33}H_{32}Cl_2F_3NO_3$

### ANALYTICAL DATA

Theoretical: C(64.08%), H(5.21%), N(2.26%)

Result: C(63.90%), H(5.23%), N(2.19%)

Chemical Structure:



**Caution: Product has not been fully validated for medical applications. For research use only.**

Tel: 609-228-6898

Fax: 609-228-5909

E-mail: [tech@MedChemExpress.com](mailto:tech@MedChemExpress.com)

Address: 1 Deer Park Dr, Suite Q, Monmouth Junction, NJ 08852, USA