

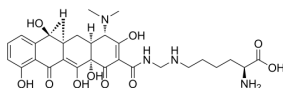
Lymecycline

Cat. No.: HY-106339
CAS No.: 992-21-2
Batch No.: 321421
Chemical Name: L-Lysine, N6-[[[(4S,4aS,5aS,6S,12aS)-4-(dimethylamino)-1,4,4a,5,5a,6,11,12a-octahydro-3,6,10,12,12a-pentahydroxy-6-methyl-1,11-dioxo-2-naphthaceny]carbonyl]amino]methyl]-

PHYSICAL AND CHEMICAL PROPERTIES

Molecular Formula: $C_{29}H_{38}N_4O_{10}$
Molecular Weight: 602.63
Storage: 4°C, sealed storage, away from moisture and light
* In solvent : -80°C, 6 months; -20°C, 1 month (sealed storage, away from moisture and light)

Chemical Structure:



ANALYTICAL DATA

Appearance: Yellow to brown (Solid)
Purity: $\geq 95.0\%$
Conclusion: The product has been tested and complies with the given specifications.

Caution: Product has not been fully validated for medical applications. For research use only.

Tel: 609-228-6898

Fax: 609-228-5909

E-mail: tech@MedChemExpress.com

Address: 1 Deer Park Dr, Suite Q, Monmouth Junction, NJ 08852, USA