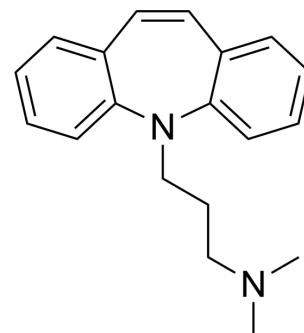


Depramine

Cat. No.:	HY-106456	
CAS No.:	303-54-8	
Molecular Formula:	C ₁₉ H ₂₂ N ₂	
Molecular Weight:	278.39	
Target:	Cholinesterase (ChE)	
Pathway:	Neuronal Signaling	
Storage:	Pure form	-20°C 3 years
		4°C 2 years
	In solvent	-80°C 6 months
		-20°C 1 month



BIOLOGICAL ACTIVITY

Description	Depramine (GP 31406) is a tricyclic antidepressant with pharmacologically activity. Depramine inhibits acetylcholinesterase Mg^{2+} -ATPase and Na^+/K^+ ATPase activity ^{[1][2]} .
IC₅₀ & Target	Acetylcholinesterase (AChE), Mg^{2+} -ATPase, Na^+/K^+ ATPase ^[1]

REFERENCES

[1]. Caratsch CG, et al. Tricyclic antidepressants: action on synaptosomal acetylcholinesterase and ATPase in the brain of guinea pigs and subcellular distribution. *Neuropharmacology*. 1973 Jun;12(6):563-75.

Caution: Product has not been fully validated for medical applications. For research use only.

Tel: 609-228-6898

Fax: 609-228-5909

E-mail: tech@MedChemExpress.com

Address: 1 Deer Park Dr, Suite Q, Monmouth Junction, NJ 08852, USA