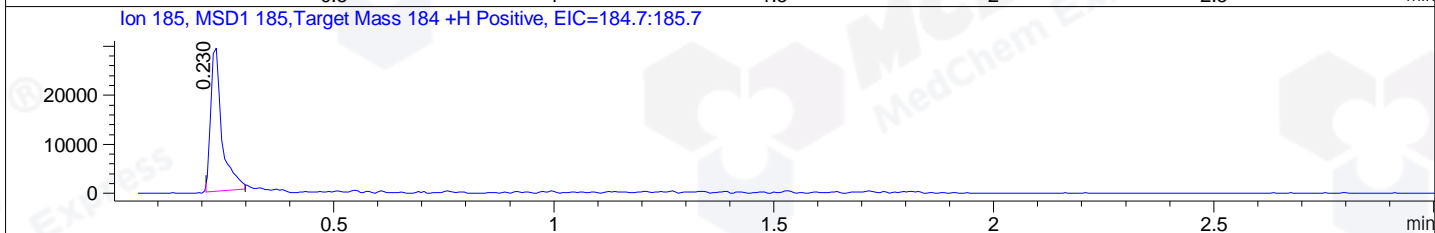
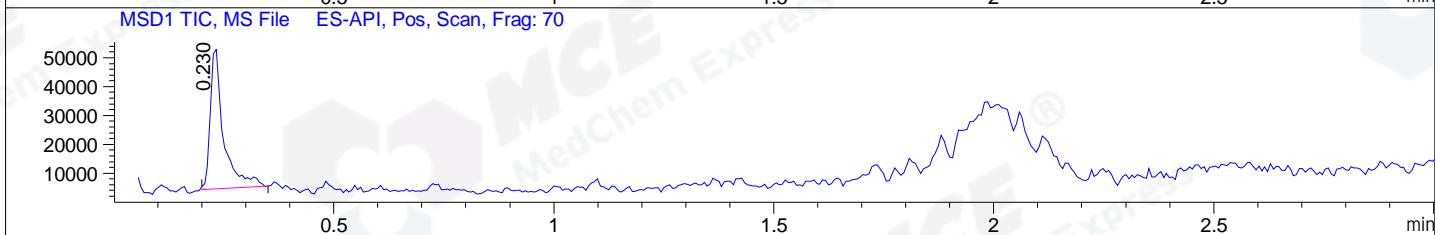
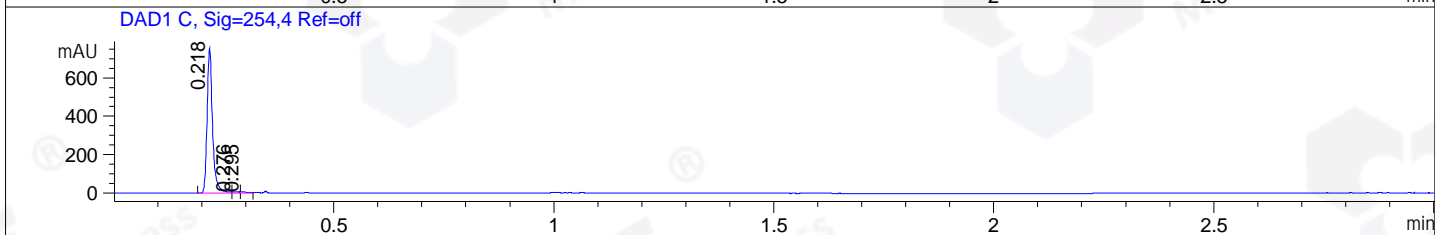
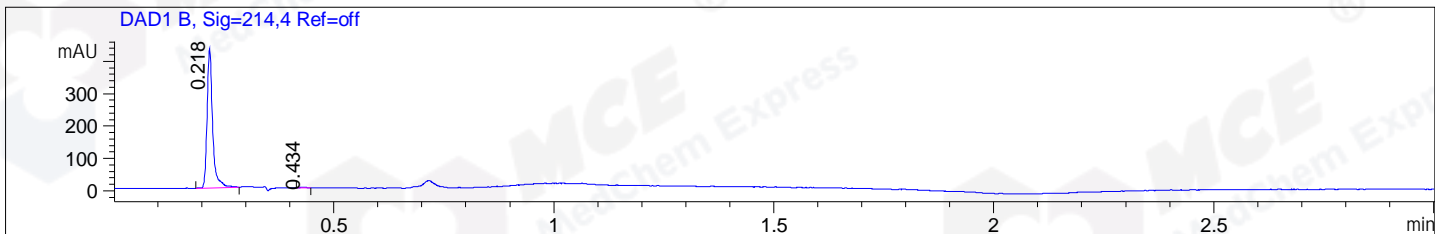


File ..\DATA\2020\20200710\1029\BIZ2020-708-WMX7.D Tgt Mass (CHM):
 Injection Date : 10 Jul 20 10:31 am +0800 Seq. Line : 14
 Sample Name : BIZ2020-708-WMX7 Location : P1-A-03
 Acq. Operator : ZJ_1432 Inj : 1
 Spec. Reported : MS Integration Inj Volume : 1 ul
 Acq. Method : D:\Chem32\1\data\2020\20200710\1029\1-POS-3MIN.M
 Analysis Method : D:\CHEM32\1\DATA\2020\20200710\1029\1-POS-3MIN.M
 Catalog No : HY-106634
 Method Info : Mobile Phase: A: water(0.01%TFA) B:ACN(0.01%TFA)
 Gradient: 5% to 95%B within 1.3 min
 Flow Rate :1.8ml/min
 Column :SunFire C18, 4.6*50mm,3.5um A-RP-607
 Oven Temperature : 45□



Integration Results for DAD1 B, Sig=214,4 Ref=off

RetTim	Width	Area	Height	Area%	MS (+)
0.22	0.01	379.87	431.02	99.38	185
0.43	0.01	2.36	2.93	0.62	261

Integration Results for DAD1 C, Sig=254,4 Ref=off

RetTim	Width	Area	Height	Area%	MS (+)
0.22	0.01	651.50	752.86	98.52	185
0.28	0.02	5.54	5.56	0.84	185
0.29	0.02	4.25	4.11	0.64	261

Integration Results for MSD1 TIC, MS File

RetTim	Width	Area	Height	Area%	MS (+)
0.23	0.03	100996.07	49761.08	100.00	185

Ret. Time: 0.23

<<<< POSITIVE SPECTRA >>>>

