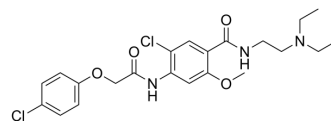


Cloxacepride

Cat. No.:	HY-106645
CAS No.:	65569-29-1
Molecular Formula:	C ₂₂ H ₂₇ Cl ₂ N ₃ O ₄
Molecular Weight:	468.37
Target:	Others
Pathway:	Others
Storage:	Please store the product under the recommended conditions in the Certificate of Analysis.



BIOLOGICAL ACTIVITY

Description	Cloxacepride is an orally active and potent antiallergic agent. Cloxacepride is a CaM (calmodulin) antagonist. Cloxacepride has anti-PCA (passive cutaneous anaphylaxis) activity ^{[1][2]} .
In Vivo	Oral ED ₅₀ values for cloxacepride of 46-49 mg/kg were comparable to that of theophylline (HY-B0809) and to an intravenous injection of 2 mg/kg of disodium chromoglycate (DSCG) followed by immediate challenge ^[1] . Cloxacepride has anti-PCA activity when administered orally 15 or 60 min before antigenic challenge ^[1] . MCE has not independently confirmed the accuracy of these methods. They are for reference only.

REFERENCES

[1]. Metz G, et al. Cloxacepride and related compounds: a new series of orally active antiallergic compounds. J Med Chem. 1983 Jul;26(7):1065-70.

[2]. Metz G, et al. Cloxacepride and related compounds: a new series of orally active antiallergic compounds. J Med Chem. 1983 Jul;26(7):1065-70.

Caution: Product has not been fully validated for medical applications. For research use only.

Tel: 609-228-6898

Fax: 609-228-5909

E-mail: tech@MedChemExpress.com

Address: 1 Deer Park Dr, Suite Q, Monmouth Junction, NJ 08852, USA