

L-365260 (hemihydrate)

Cat. No.: HY-106840A

Batch No.: 229986

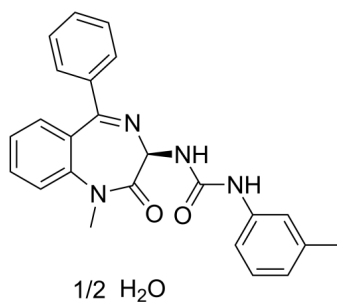
Molecular Formula: C₂₄H₂₄N₄O₃

ANALYTICAL DATA

Theoretical: C(70.74%), H(5.69%), N(13.75%)

Result: C(70.63%), H(6.01%), N(13.51%)

Chemical Structure:



Caution: Product has not been fully validated for medical applications. For research use only.

Tel: 609-228-6898

Fax: 609-228-5909

E-mail: tech@MedChemExpress.com

Address: 1 Deer Park Dr, Suite Q, Monmouth Junction, NJ 08852, USA