

Asoxime (dichloride)

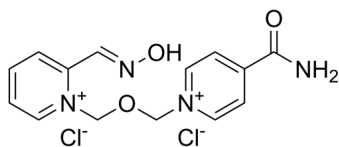
Cat. No.: HY-106901A
Batch No.: 374609
CAS No.: 34433-31-3
Molecular Formula: C₁₄H₁₆Cl₂N₄O₃

ANALYTICAL DATA

Theoretical: C(46.81%), H(4.49%), N(15.60%)

Result: C(44.37%), H(4.80%), N(14.63%)

Chemical Structure:



Caution: Product has not been fully validated for medical applications. For research use only.

Tel: 609-228-6898

Fax: 609-228-5909

E-mail: tech@MedChemExpress.com

Address: 1 Deer Park Dr, Suite Q, Monmouth Junction, NJ 08852, USA