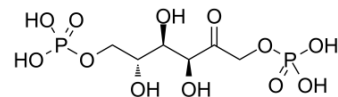


## Fosfructose

Cat. No.:	HY-106950
CAS No.:	488-69-7
Molecular Formula:	C <sub>6</sub> H <sub>14</sub> O <sub>12</sub> P <sub>2</sub>
Molecular Weight:	340.12
Target:	Endogenous Metabolite
Pathway:	Metabolic Enzyme/Protease
Storage:	Please store the product under the recommended conditions in the COA.



### BIOLOGICAL ACTIVITY

#### Description

Fosfructose (Diphosphofructose; Esafosfan; FDP) is a cytoprotective natural sugar phosphate for the potential treatment of cardiovascular ischemia, sickle cell anemia and asthma. It acts by stimulating anaerobic glycolysis which generates adenosine triphosphate under ischemic conditions.

#### IC<sub>50</sub> & Target

Human Endogenous Metabolite

### REFERENCES

[1]. Folkesson HG, et al. Fosfructose (Questcor). IDrugs. 2001 Dec;4(12):1401-7.

**Caution: Product has not been fully validated for medical applications. For research use only.**

Tel: 609-228-6898

Fax: 609-228-5909

E-mail: [tech@MedChemExpress.com](mailto:tech@MedChemExpress.com)

Address: 1 Deer Park Dr, Suite Q, Monmouth Junction, NJ 08852, USA