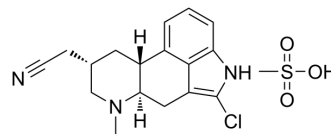


## Lergotriole mesylate

Cat. No.:	HY-107002A
CAS No.:	51473-23-5
Molecular Formula:	C <sub>18</sub> H <sub>22</sub> ClN <sub>3</sub> O <sub>3</sub> S
Molecular Weight:	395.9
Target:	Dopamine Receptor
Pathway:	GPCR/G Protein; Neuronal Signaling
Storage:	Please store the product under the recommended conditions in the Certificate of Analysis.



### BIOLOGICAL ACTIVITY

#### Description

Lergotriole mesylate is a potent and orally active dopamine agonist and a prolactin secretion inhibitor. Lergotriole mesylate inhibits prolactin release from pituitaries by activating an adenohipophyseal dopamine receptor. Lergotriole mesylate has the potential for the research of Parkinson's disease<sup>[1][2][3]</sup>.

### REFERENCES

- [1]. Clemens JA, et al. Inhibition of prolactin secretion by lergotriole mesylate: mechanism of action. *Acta Endocrinol (Copenh)*. 1975 Jun;79(2):230-7.
- [2]. Lemberger L, et al. The inhibitory effect of an ergoline derivative (lergotriole, compound 83636) on prolactin secretion in man. *J Clin Endocrinol Metab*. 1974 Sep;39(3):579-84.
- [3]. Lieberman A, et al. Treatment of Parkinson's disease with lergotriole mesylate. *JAMA*. 1977 Nov 28;238(22):2380-2.

**Caution: Product has not been fully validated for medical applications. For research use only.**

Tel: 609-228-6898

Fax: 609-228-5909

E-mail: tech@MedChemExpress.com

Address: 1 Deer Park Dr, Suite Q, Monmouth Junction, NJ 08852, USA