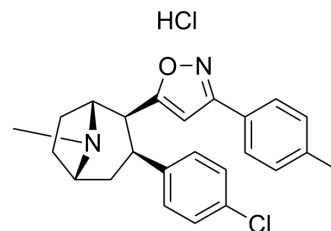


RTI 336

Cat. No.:	HY-107055
CAS No.:	204069-50-1
Molecular Formula:	C ₂₄ H ₂₆ Cl ₂ N ₂ O
Molecular Weight:	429.38
Target:	Dopamine Transporter
Pathway:	Neuronal Signaling
Storage:	Please store the product under the recommended conditions in the Certificate of Analysis.



BIOLOGICAL ACTIVITY

Description	RTI 336 is a phenyltropane analog, as well as a potent and selective dopamine transporter (DAT) inhibitor. RTI 336 inhibits addictive agent induced locomotor activity and self-administration in Lewis rats. RTI 336 exhibits inhibitory effects depending on inherent NAc DAT levels ^[1] .
In Vivo	RTI 336 (3 mg/kg; sc; 30 min pretreatment) significantly decreases the number of infusions of addictive agent in Lewis rats ^[1] . RTI 336 (3 mg/kg; ip; 30 min pretreatment) decreases response rates (lever presses/s) induced by addictive agent in Lewis rats ^[1] . MCE has not independently confirmed the accuracy of these methods. They are for reference only.

REFERENCES

[1]. Haile CN, et al. Cocaine self-administration and locomotor activity are altered in Lewis and F344 inbred rats by RTI 336, a 3-phenyltropane analog that binds to the dopamine transporter. *Brain Res.* 2005 Sep 7;1055(1-2):186-95.

Caution: Product has not been fully validated for medical applications. For research use only.

Tel: 609-228-6898

Fax: 609-228-5909

E-mail: tech@MedChemExpress.com

Address: 1 Deer Park Dr, Suite Q, Monmouth Junction, NJ 08852, USA