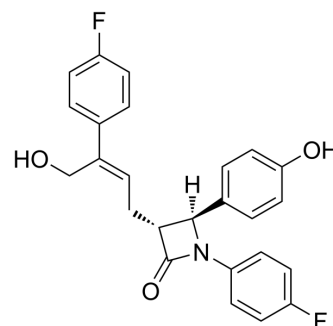


Hyzetimibe

Cat. No.:	HY-107176A
CAS No.:	1266548-74-6
Molecular Formula:	C ₂₅ H ₂₁ F ₂ NO ₃
Molecular Weight:	421.44
Target:	Others
Pathway:	Others
Storage:	Please store the product under the recommended conditions in the Certificate of Analysis.



BIOLOGICAL ACTIVITY

Description	Hyzetimibe is a cholesterol absorption inhibitor. Hyzetimibe blocks the intestinal absorption of cholesterol and phytol. Hyzetimibe is well tolerated in animal models, with an LD _{max} 2000 mg/kg in rats and an LD _{max} 500 mg/kg in rhesus monkeys [1].
In Vivo	Hyzetimibe lowers cholesterol levels in rhesus monkeys fed high cholesterol and can be used to study for hypercholesterolemia ^[1] . MCE has not independently confirmed the accuracy of these methods. They are for reference only.

REFERENCES

[1]. Ruan Z, et al. Pharmacokinetics, pharmacodynamics, safety, and tolerability of hyzetimibe (HS-25) in healthy Chinese subjects. *J Clin Pharmacol.* 2014 Oct;54(10):1144-52.

Caution: Product has not been fully validated for medical applications. For research use only.

Tel: 609-228-6898

Fax: 609-228-5909

E-mail: tech@MedChemExpress.com

Address: 1 Deer Park Dr, Suite Q, Monmouth Junction, NJ 08852, USA