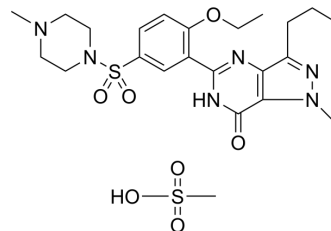


Sildenafil Mesylate

Cat. No.:	HY-107191
CAS No.:	1308285-21-3
Molecular Formula:	C ₂₃ H ₃₄ N ₆ O ₇ S ₂
Molecular Weight:	570.68
Target:	Phosphodiesterase (PDE)
Pathway:	Metabolic Enzyme/Protease
Storage:	Please store the product under the recommended conditions in the Certificate of Analysis.



BIOLOGICAL ACTIVITY

Description

Sildenafil Mesylate is an orally active and selective phosphodiesterase type 5 (PDE5) inhibitor. Sildenafil Mesylate can be used in studies of erectile dysfunction and cancer^[1].

CUSTOMER VALIDATION

- Bioeng Transl Med. 2023 Jul 2.
- Int J Mol Sci. 2022 Jun 20;23(12):6860.
- ACS Omega. 2020 Nov 15;5(46):29935-29942.
- Biochem Biophys Res Commun. 2021 Feb 12;547:9-14.
- Physiol Rep. 2023 Jan;11(1):e15549.

See more customer validations on www.MedChemExpress.com

REFERENCES

[1]. Haider M, et al. The Potential Role of Sildenafil in Cancer Management through EPR Augmentation. J Pers Med. 2021 Jun 21;11(6):585.

Caution: Product has not been fully validated for medical applications. For research use only.

Tel: 609-228-6898

Fax: 609-228-5909

E-mail: tech@MedChemExpress.com

Address: 1 Deer Park Dr, Suite Q, Monmouth Junction, NJ 08852, USA