

PGlu-3-methyl-His-Pro-NH₂ (TFA)

Cat. No.: HY-107380A

Batch No.: 58888

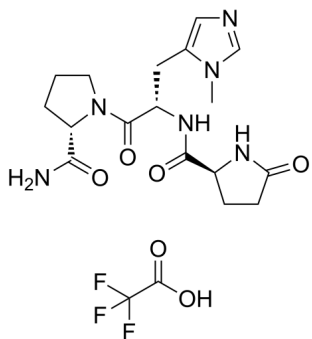
Molecular Formula: C₁₉H₂₅F₃N₆O₆

ANALYTICAL DATA

Theoretical: C(-), H(-), N(-), Peptide Content(≥60.0%)

Result: C(40.27%), H(5.18%), N(15.57%), Peptide Content(69.78%)

Chemical Structure:



Caution: Product has not been fully validated for medical applications. For research use only.

Tel: 609-228-6898

Fax: 609-228-5909

E-mail: tech@MedChemExpress.com

Address: 1 Deer Park Dr, Suite Q, Monmouth Junction, NJ 08852, USA