

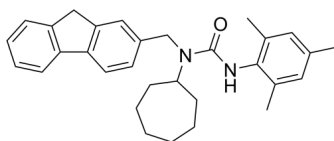
YM-750

Cat. No.: HY-107396
Batch No.: 126662
CAS No.: 138046-43-2
Molecular Formula: C₃₁H₃₆N₂O

ANALYTICAL DATA

Theoretical: C(82.26%)、H(8.02%)、N(6.19%)
Result: C(82.08%)、H(8.07%)、N(6.16%)

Chemical Structure:



Caution: Product has not been fully validated for medical applications. For research use only.

Tel: 609-228-6898

Fax: 609-228-5909

E-mail: tech@MedChemExpress.com

Address: 1 Deer Park Dr, Suite Q, Monmouth Junction, NJ 08852, USA