

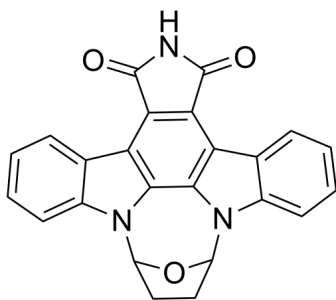
SB-218078

Cat. No.: HY-107407
Batch No.: 113014
CAS No.: 135897-06-2
Molecular Formula: C₂₄H₁₅N₃O₃

ANALYTICAL DATA

Theoretical: C(73.27%)、H(3.84%)、N(10.68%)
Result: C(72.99%)、H(3.85%)、N(10.67%)

Chemical Structure:



Caution: Product has not been fully validated for medical applications. For research use only.

Tel: 609-228-6898

Fax: 609-228-5909

E-mail: tech@MedChemExpress.com

Address: 1 Deer Park Dr, Suite Q, Monmouth Junction, NJ 08852, USA