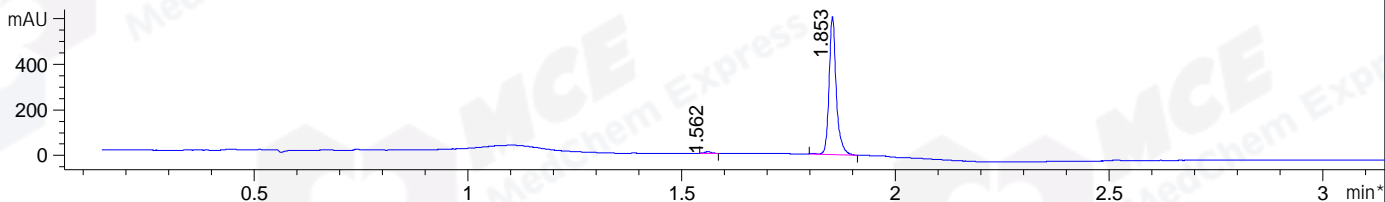
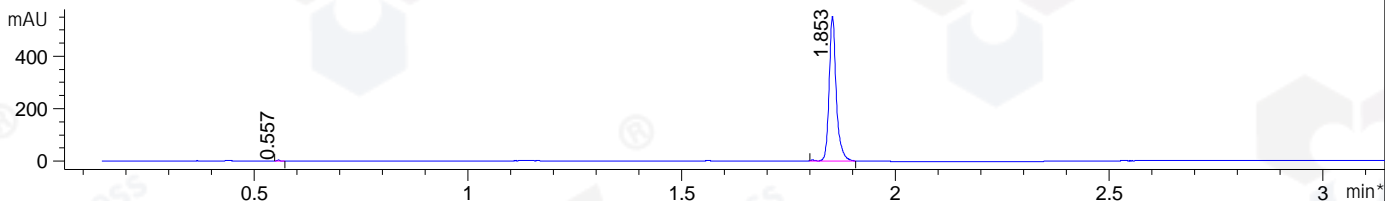


File ..\1\DATA\2020\20200604\985\MXY7949-001-1\_1.D Tgt Mass (CHM):  
 Injection Date : 4 Jun 20 7:26 pm +0800 Seq. Line : 124  
 Sample Name : MXY7949-001-1\_1 Location : P1-D-08  
 Acq. Operator : ZJ\_1432 Inj : 1  
 Spec. Reported : MS Integration Inj Volume : 0.5 ul  
 Acq. Method : D:\Chem32\1\data\2020\20200604\985\1-POS-3MIN-1(110-1500).M  
 Analysis Method : D:\Chem32\1\data\2020\20200604\985\1-POS-3MIN-1(110-1500).M  
 Catalog No : HY-107425  
 Method Info : Mobile Phase: A: water(0.01%TFA) B:ACN(0.01%TFA)  
 Gradient: 5% to 95%B within 1.3 min  
 Flow Rate :1.8ml/min  
 Column :SunFire C18, 4.6\*50mm,3.5um A-RP-314  
 Oven Temperature : 45C

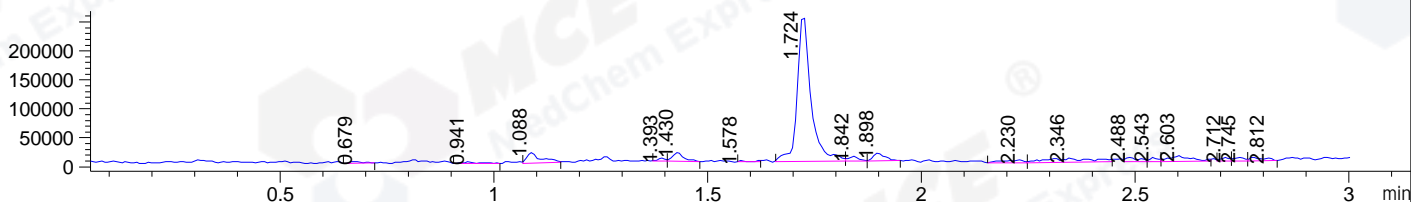
\*DAD1 B, Sig=214,4 Ref=off



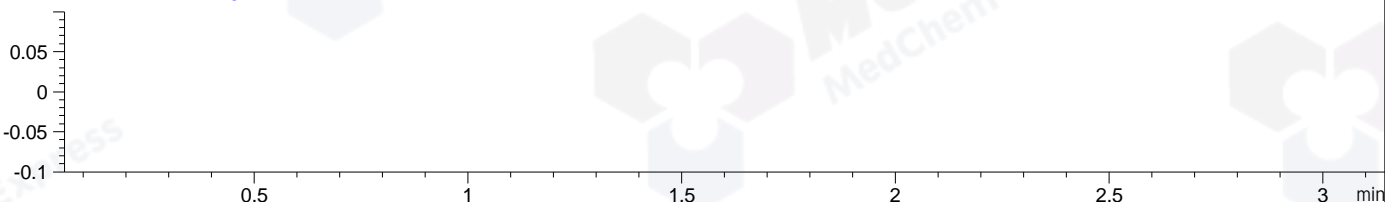
\*DAD1 C, Sig=254,4 Ref=off



MSD1 TIC, MS File ES-API, Pos, Scan, Frag: 70



Ion 1, MSD1 1, Target Mass 0 +H Positive, EIC=0.7:1.7



Integration Results for DAD1 B, Sig=214,4 Ref=off

RetTim	Width	Area	Height	Area%	MS (+)
1.56	0.02	8.08	7.60	1.13	130
1.85	0.02	705.91	605.43	98.87	130

Integration Results for DAD1 C, Sig=254,4 Ref=off

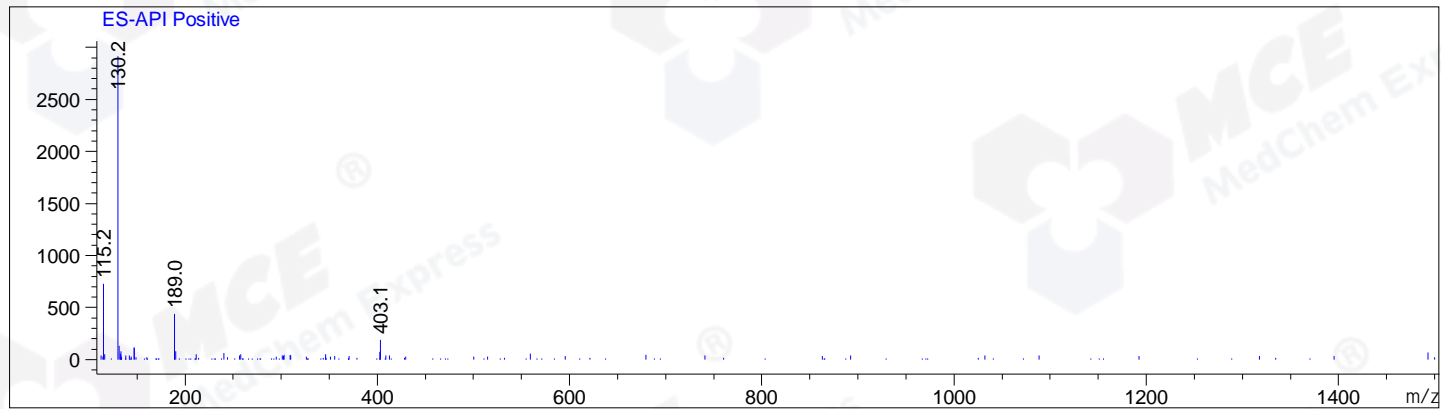
RetTim	Width	Area	Height	Area%	MS (+)
0.56	0.01	2.04	4.05	0.32	130
1.85	0.02	639.43	552.39	99.68	130

Integration Results for MSD1 TIC, MS File

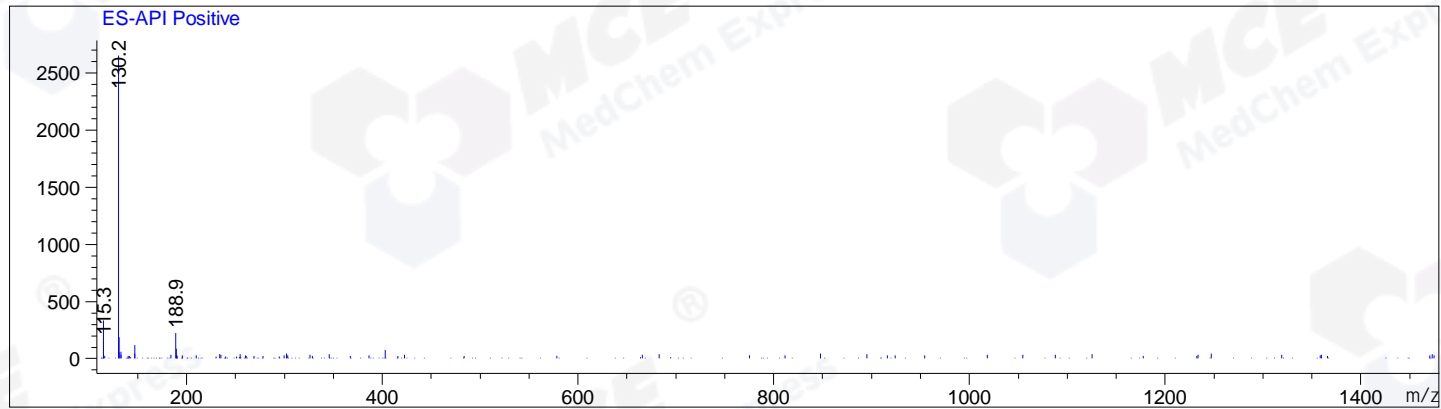
RetTim	Width	Area	Height	Area%	MS (+)
0.68	0.03	5522.28	2910.70	0.66	130
0.94	0.04	6728.14	2765.38	0.80	130
1.09	0.03	40799.91	17619.82	4.87	189
1.39	0.02	6292.76	5673.46	0.75	130
1.43	0.03	27559.27	15025.01	3.29	130

1.58	0.02	2217.54	2365.52	0.26	130
1.72	0.03	552380.50	254868.63	65.97	502
1.84	0.02	12408.26	7929.18	1.48	130
1.90	0.03	24360.92	13465.92	2.91	403
2.23	0.05	16521.08	5166.29	1.97	130
2.35	0.10	51775.16	7015.66	6.18	130
2.49	0.03	15323.41	7064.12	1.83	130
2.54	0.02	9246.15	7513.88	1.10	130
2.60	0.05	34027.38	9454.46	4.06	130
2.71	0.02	8007.35	5612.05	0.96	130
2.75	0.03	9670.87	5666.73	1.16	130
2.81	0.04	14453.17	4779.24	1.73	130

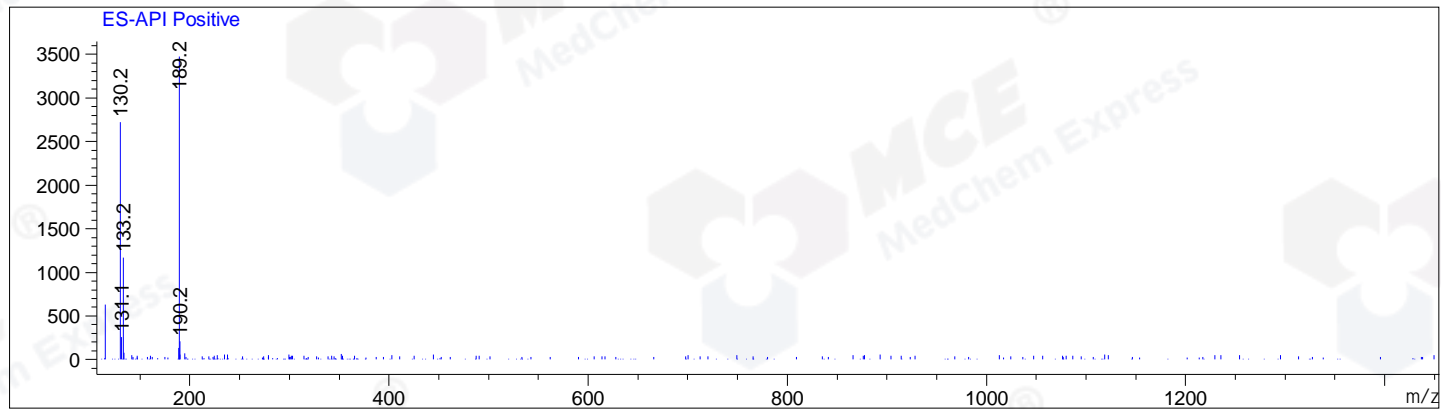
Ret. Time: 0.68 <<<< POSITIVE SPECTRA >>>>



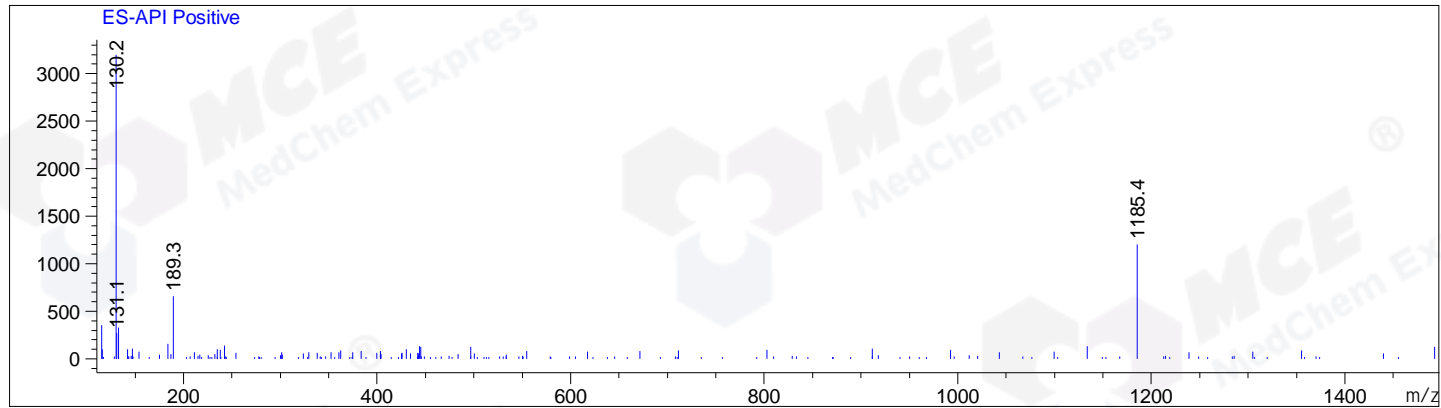
Ret. Time: 0.94



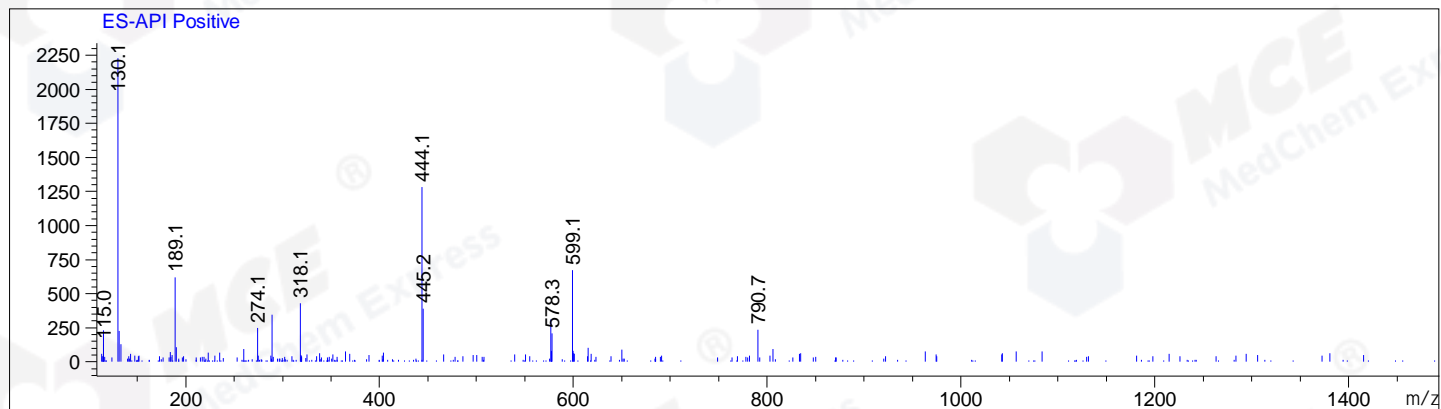
Ret. Time: 1.09



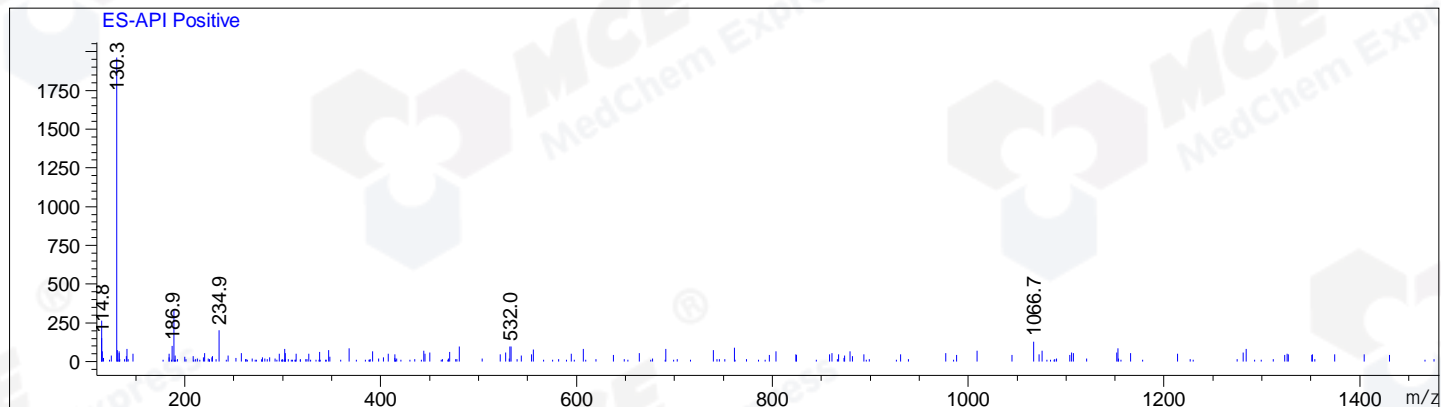
Ret. Time: 1.39



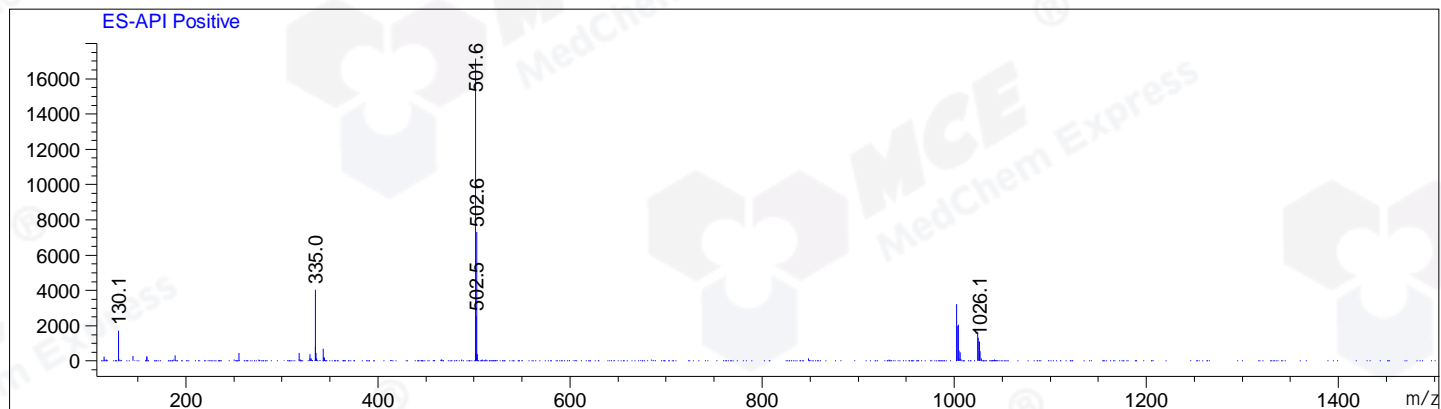
Ret. Time: 1.43



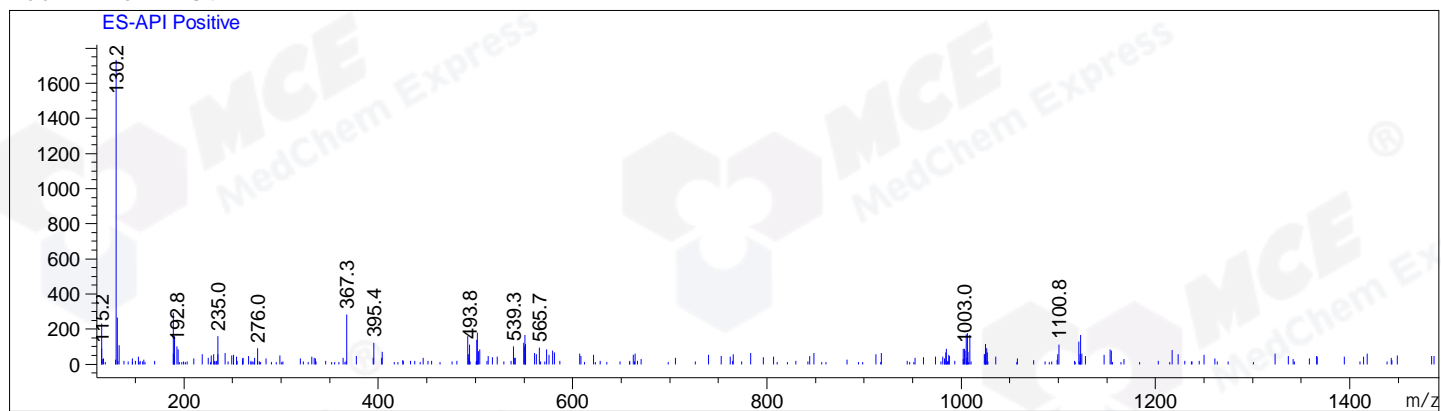
Ret. Time: 1.58



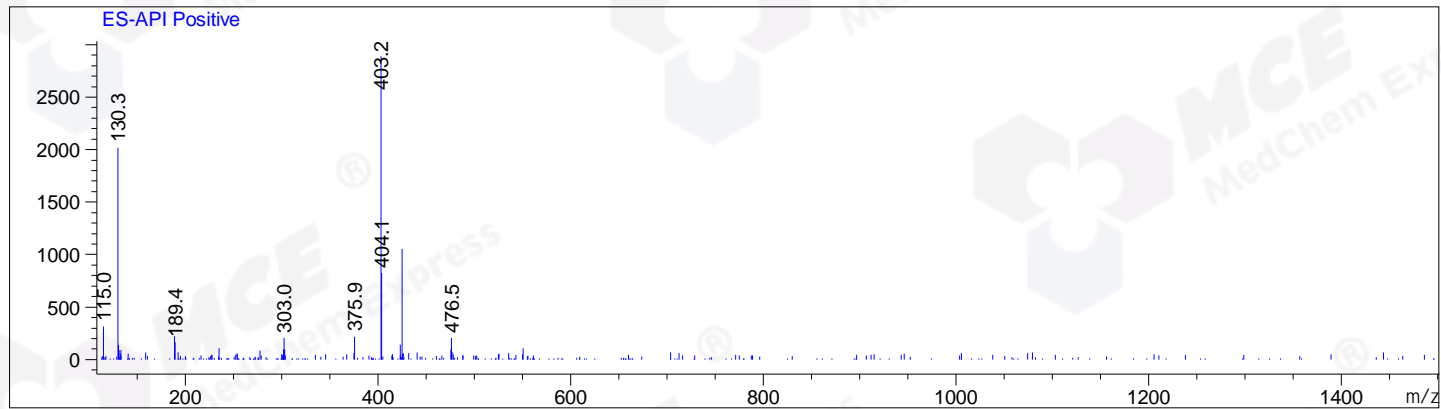
Ret. Time: 1.72



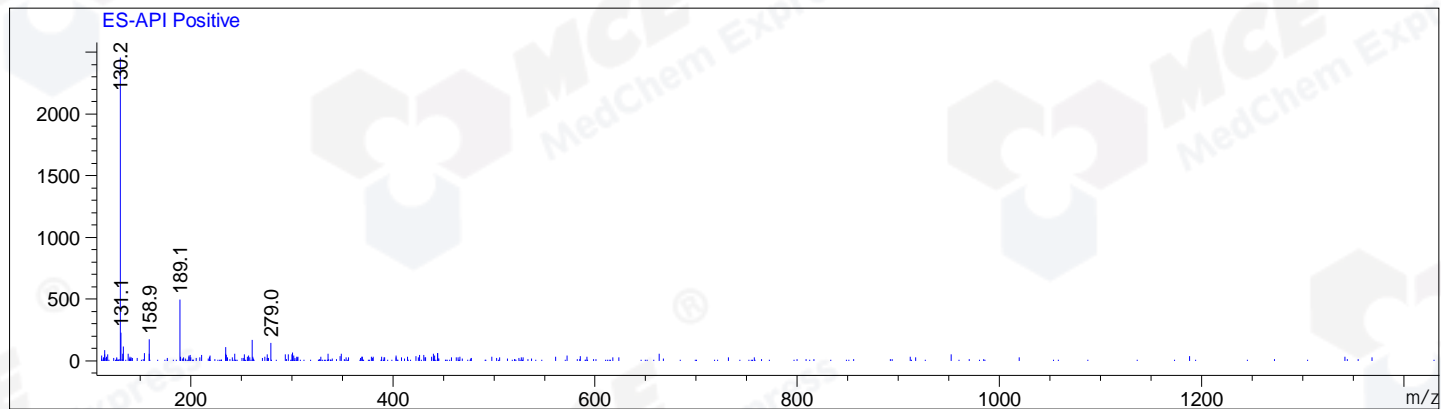
Ret. Time: 1.84



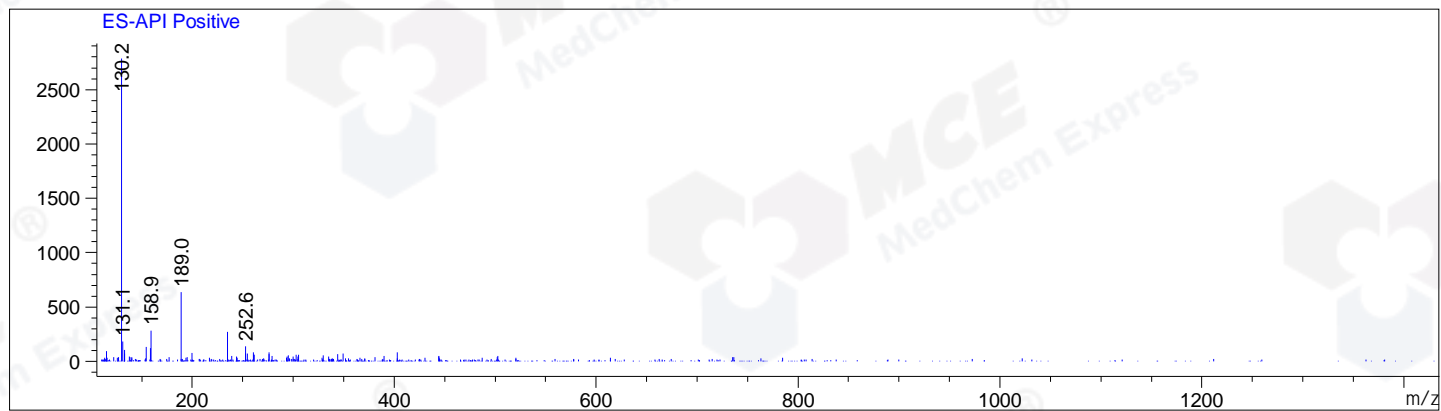
Ret. Time: 1.90



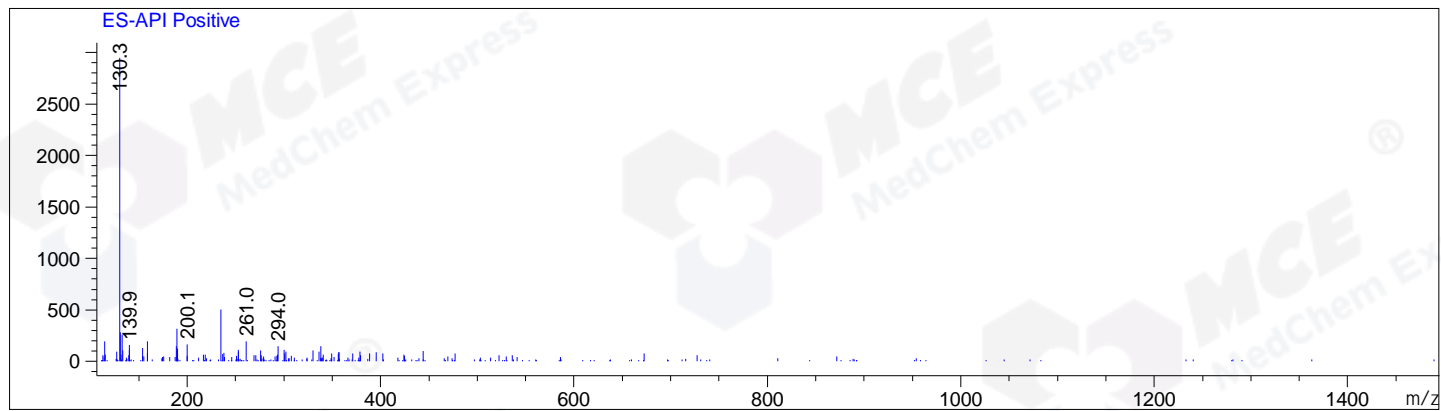
Ret. Time: 2.23



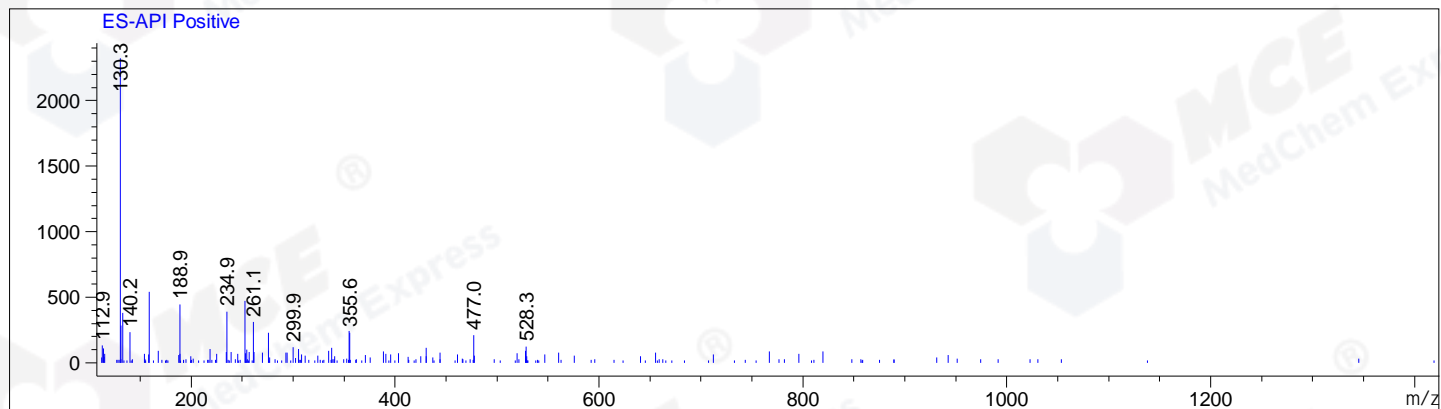
Ret. Time: 2.35



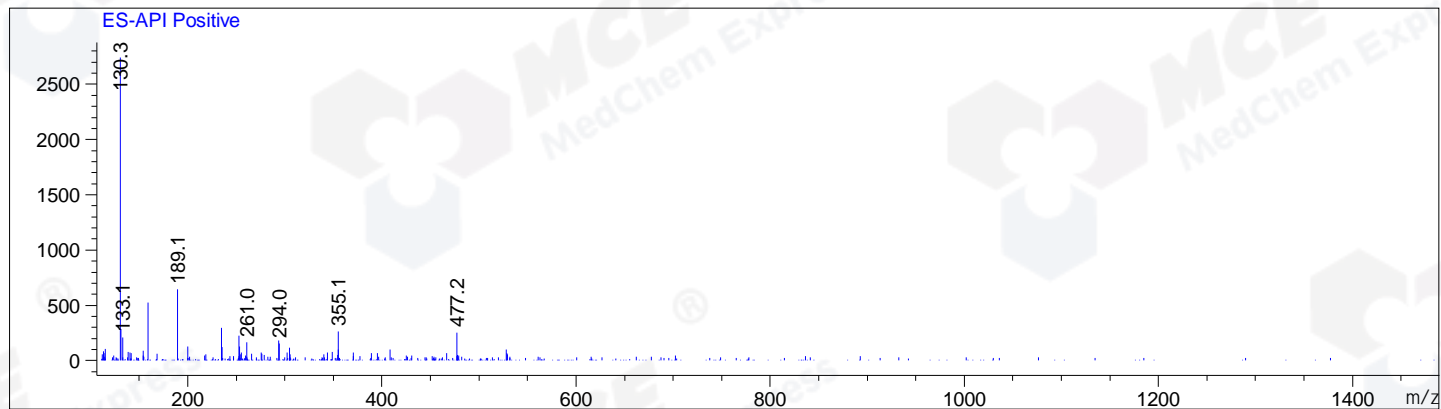
Ret. Time: 2.49



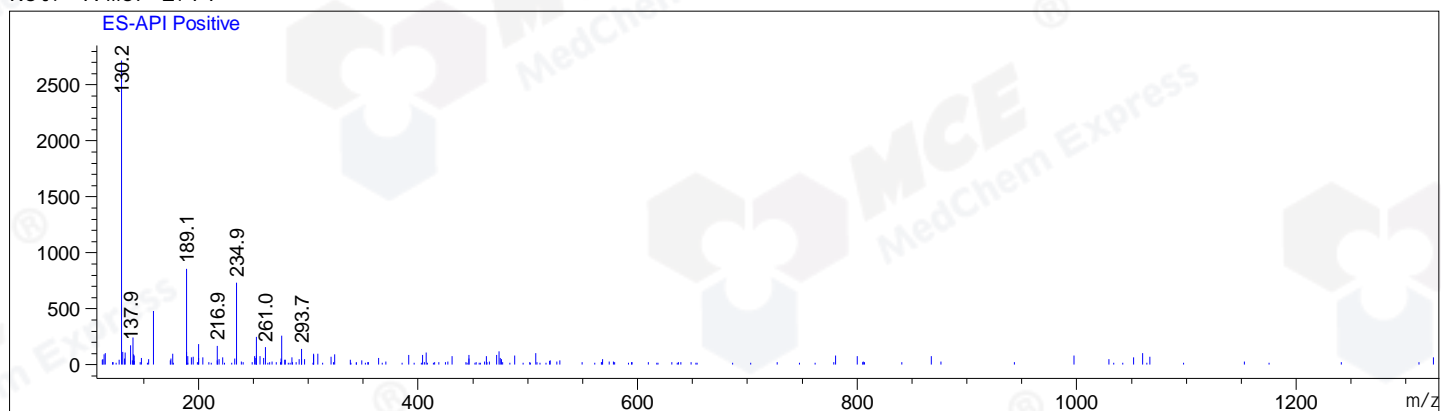
Ret. Time: 2.54



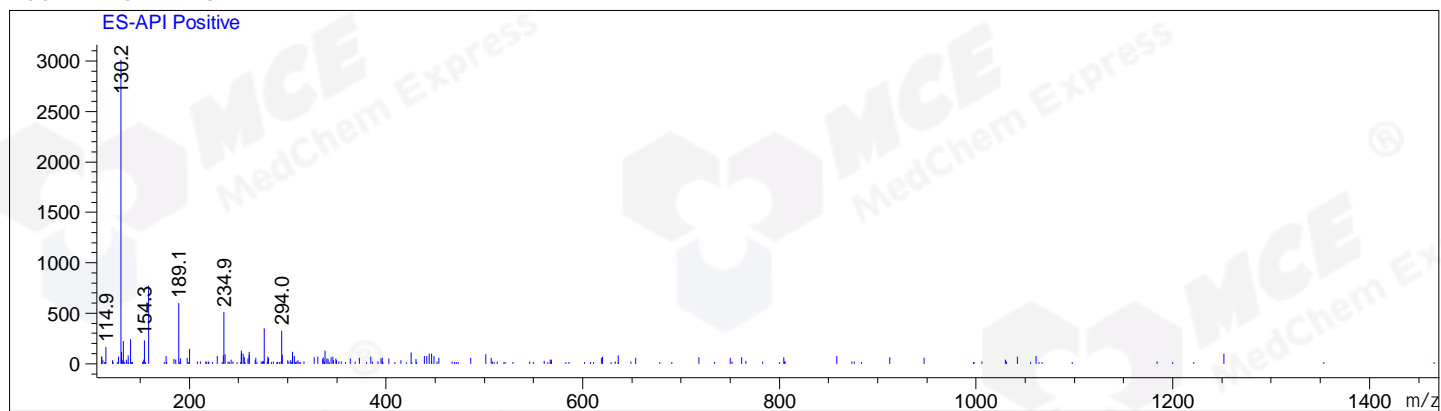
Ret. Time: 2.60



Ret. Time: 2.71



Ret. Time: 2.75



Ret. Time: 2.81

