

## PD-166793

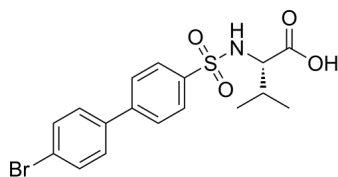
---

Cat. No.: HY-107428  
Batch No.: 260440  
CAS No.: 199850-67-4  
Molecular Formula: C<sub>17</sub>H<sub>18</sub>BrNO<sub>4</sub>S

### ANALYTICAL DATA

Theoretical: C(49.52%), H(4.40%), N(3.40%)  
Result: C(49.52%), H(4.40%), N(3.40%)

Chemical Structure:



**Caution: Product has not been fully validated for medical applications. For research use only.**

Tel: 609-228-6898

Fax: 609-228-5909

E-mail: [tech@MedChemExpress.com](mailto:tech@MedChemExpress.com)

Address: 1 Deer Park Dr, Suite Q, Monmouth Junction, NJ 08852, USA