

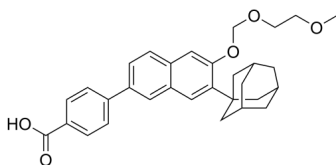
CD2665

Cat. No.: HY-107437
Batch No.: 156529
CAS No.: 170355-78-9
Molecular Formula: C₃₁H₃₄O₅

ANALYTICAL DATA

Theoretical: C(76.52%)、H(7.04%)、N(-)
Result: C(76.19%)、H(7.10%)、N(-)

Chemical Structure:



Caution: Product has not been fully validated for medical applications. For research use only.

Tel: 609-228-6898

Fax: 609-228-5909

E-mail: tech@MedChemExpress.com

Address: 1 Deer Park Dr, Suite Q, Monmouth Junction, NJ 08852, USA