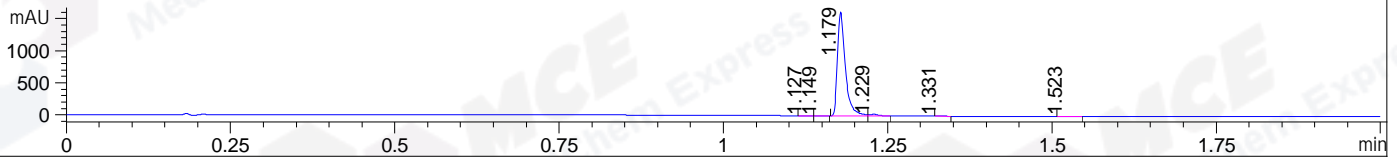
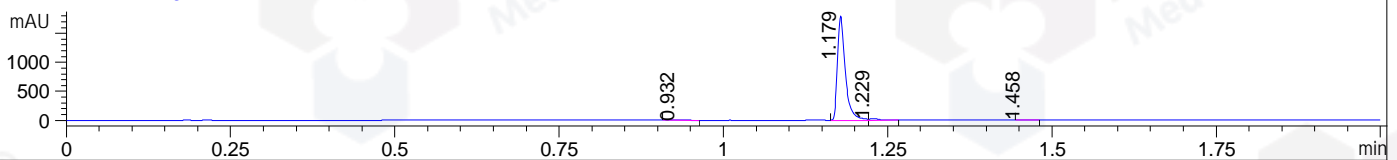


File ..0200903 2020-09-03 08-41-02\XWY8308-003-9.D Tgt Mass (CHM):
Injection Date : 3 Sep 20 5:55 pm +0800 Seq. Line : 136
Sample Name : XWY8308-003-9 Location : P1-A-05
Acq. Operator : SYSTEM Inj : 1
Spec. Reported : MS Integration Inj Volume : 0.2 ul
Acq. Method : D:\LCMS03\Data\20200903\20200903 2020-09-03 08-41-02\1-POS-UPLC2.0MIN(0.8ML) -
Analysis Method : D:\LCMS03\Data\2020\20200903\20200903 2020-09-03 08-41-02\1-POS-UPLC2.0MIN(0.8ML) -
Catalog No : HY-107508
Method Info : Mobile Phase: A: water(0.01%TFA) B:ACN(0.01%TFA)
Gradient: 5% to 95%B within 0.6 min
Flow Rate :0.8ml/min
Column :Poroshell 120 EC- C18, 2.1*50mm,1.9um A-RP-463
Oven Temperature : 45C

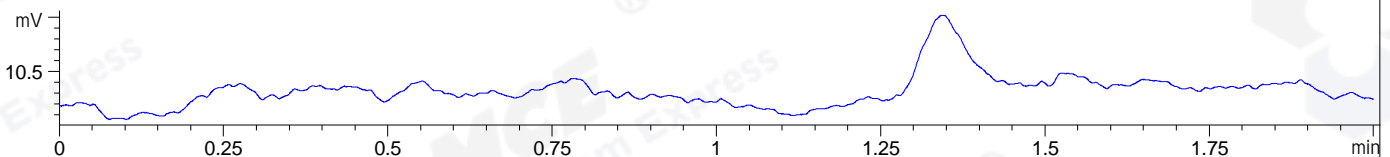
DAD1 A, Sig=214,4 Ref=off



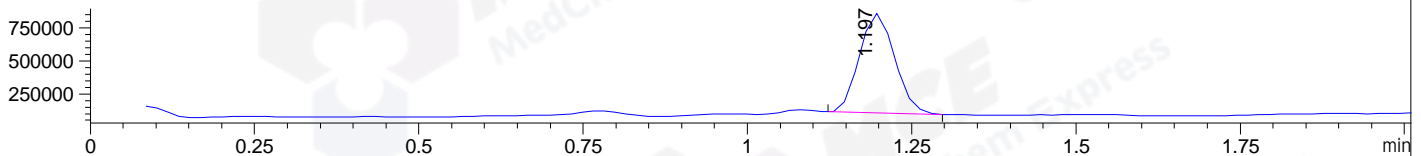
DAD1 B, Sig=254,4 Ref=off



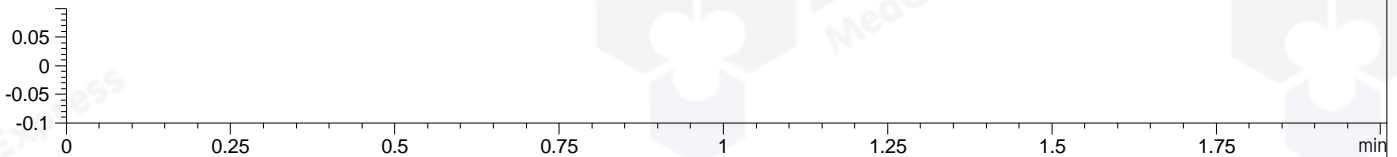
ELS1 A, ELSD Signal



MSD1 TIC, MS File ES-API, Pos, Scan, Frag: 70



Ion 1, MSD1 1, Target Mass 0 +H Positive, EIC=0.7:1.7



Integration Results for DAD1 A, Sig=214,4 Ref=off

RetTim	Width	Area	Height	Area%	MS (+)
1.13	0.02	0.76	0.83	0.05	161
1.15	0.01	0.90	1.21	0.06	385
1.18	0.01	1356.99	1618.95	98.04	385
1.23	0.02	23.02	24.86	1.66	385
1.33	0.01	0.85	1.14	0.06	161
1.52	0.01	1.64	1.92	0.12	161

Integration Results for DAD1 B, Sig=254,4 Ref=off

RetTim	Width	Area	Height	Area%	MS (+)
0.93	0.02	0.97	0.74	0.06	161
1.18	0.01	1502.30	1800.20	98.08	385
1.23	0.02	27.61	28.57	1.80	385
1.46	0.01	0.88	1.10	0.06	161

Integration Results for ELS1 A, ELSD Signal

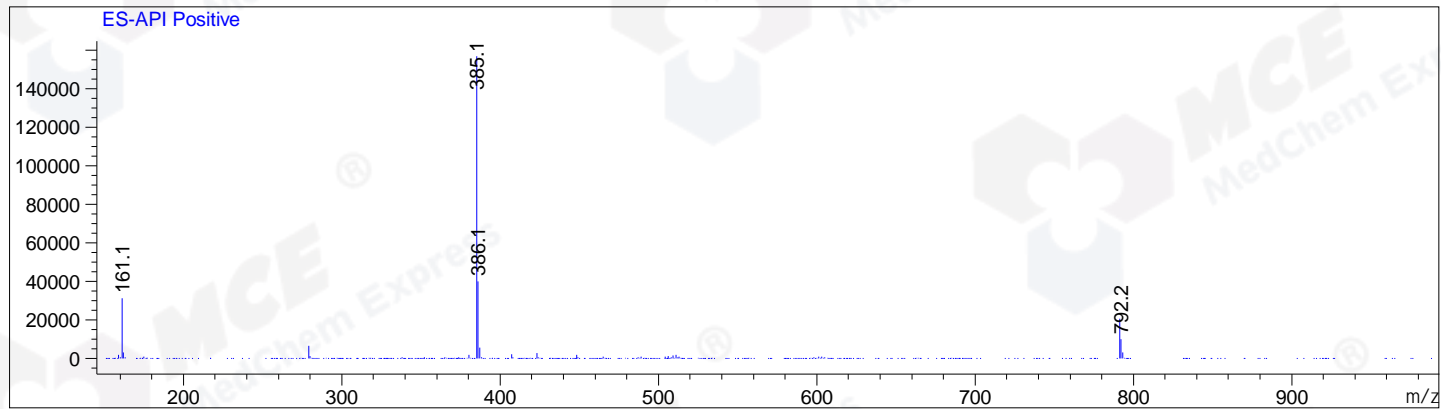
RetTim	Width	Area	Height	Area%	MS (+)
--------	-------	------	--------	-------	--------

Integration Results for MSD1 TIC, MS File

RetTim	Width	Area	Height	Area%	MS(+)
1.20	0.06	2836849.00	753476.31	100.00	385

Ret. Time: 1.20

<<<< POSITIVE SPECTRA >>>>



*** End of Report ***