

## (S)-3,4-DCPG

---

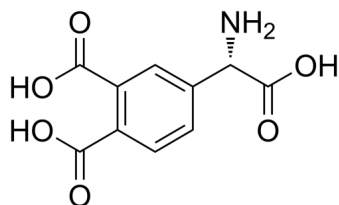
Cat. No.: HY-107516  
Batch No.: 160070  
CAS No.: 201730-11-2  
Molecular Formula: C<sub>10</sub>H<sub>9</sub>NO<sub>6</sub>

### ANALYTICAL DATA

Theoretical: C(48.39%)、H(4.06%)、N(5.64%)

Result: C(48.38%)、H(4.02%)、N(5.77%)

Chemical Structure:



**Caution: Product has not been fully validated for medical applications. For research use only.**

Tel: 609-228-6898

Fax: 609-228-5909

E-mail: [tech@MedChemExpress.com](mailto:tech@MedChemExpress.com)

Address: 1 Deer Park Dr, Suite Q, Monmouth Junction, NJ 08852, USA