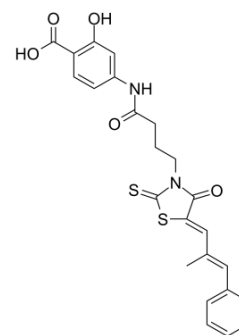


## ML 145

Cat. No.:	HY-107536
CAS No.:	1164500-72-4
Molecular Formula:	C <sub>24</sub> H <sub>22</sub> N <sub>2</sub> O <sub>5</sub> S <sub>2</sub>
Molecular Weight:	482.57
Target:	CXCR
Pathway:	GPCR/G Protein; Immunology/Inflammation
Storage:	Please store the product under the recommended conditions in the COA.



### BIOLOGICAL ACTIVITY

#### Description

ML 145 is a selective **GPR35/CXCR8** antagonist with an **IC<sub>50</sub>/EC<sub>50</sub>** of 20.1 nM, but not for the related GPR55 orphan receptor<sup>[1]</sup>. GPR35 is expressed by various cells of the immune system and it may have potential as a therapeutic target in inflammatory disease<sup>[2]</sup>.

#### IC<sub>50</sub> & Target

CXCR8  
20.1 nM (IC<sub>50</sub>)

### REFERENCES

- [1]. Heynen-Genel S, et al. Selective GPR35 Antagonists - Probes 1 & 2. National Center for Biotechnology Information (US); 2010-2010 Feb 28.
- [2]. Binti Mohd Amir NAS, et al. Evidence for the Existence of a CXCL17 Receptor Distinct from GPR35. J Immunol. 2018 Jul 15;201(2):714-724.

**Caution: Product has not been fully validated for medical applications. For research use only.**

Tel: 609-228-6898

Fax: 609-228-5909

E-mail: tech@MedChemExpress.com

Address: 1 Deer Park Dr, Suite Q, Monmouth Junction, NJ 08852, USA