

UK-370106

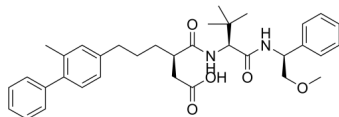
Cat. No.: HY-107639
Batch No.: 114350
CAS No.: 230961-21-4
Molecular Formula: C₃₅H₄₄N₂O₅

ANALYTICAL DATA

Theoretical: C(72.83%)、H(7.77%)、N(4.85%)

Result: C(72.64%)、H(7.83%)、N(4.93%)

Chemical Structure:



Caution: Product has not been fully validated for medical applications. For research use only.

Tel: 609-228-6898

Fax: 609-228-5909

E-mail: tech@MedChemExpress.com

Address: 1 Deer Park Dr, Suite Q, Monmouth Junction, NJ 08852, USA