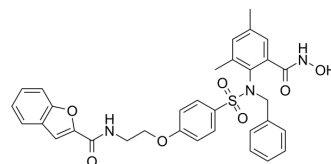


WAY-170523

Cat. No.:	HY-107640
CAS No.:	307002-73-9
Molecular Formula:	C ₃₃ H ₃₁ N ₃ O ₇ S
Molecular Weight:	613.68
Target:	MMP
Pathway:	Metabolic Enzyme/Protease
Storage:	Please store the product under the recommended conditions in the Certificate of Analysis.



BIOLOGICAL ACTIVITY

Description	WAY-170523 is a potent and selective MMP-13 (matrix metalloproteinase-13) inhibitor, with an IC ₅₀ of 17 nM. WAY-170523 can directly attenuate ERK1/2 phosphorylation. WAY-170523 inhibits the invasion of PC-3 cells, can be used for prostate cancer research ^{[1][2]} .		
IC₅₀ & Target	MMP13 17 nM (IC ₅₀)	MMP-9 945 nM (IC ₅₀)	MMP-1 10 μM (IC ₅₀)
In Vitro	WAY-170523 has an IC ₅₀ of 17 nM for MMP-13 and shows > 5800-, 56-, and > 500-fold selectivity against MMP-I, MMP-9, and TACE, respectively. MCE has not independently confirmed the accuracy of these methods. They are for reference only.		

REFERENCES

[1]. James M. Chen, et al. Structure-Based Design of a Novel, Potent, and Selective Inhibitor for MMP-13 Utilizing NMR Spectroscopy and Computer-Aided Molecular Design. J. Am. Chem. Soc. 2000, 122, 40, 9648-9654.

[2]. Mervi Toriseva, et al. Phenotypic screening using AMIDA identifies different drug responses in breast and prostate cancer cell lines in an organotypic cell culture model. Cancer Res (2018) 78 (13_Supplement): 1158.

Caution: Product has not been fully validated for medical applications. For research use only.

Tel: 609-228-6898

Fax: 609-228-5909

E-mail: tech@MedChemExpress.com

Address: 1 Deer Park Dr, Suite Q, Monmouth Junction, NJ 08852, USA