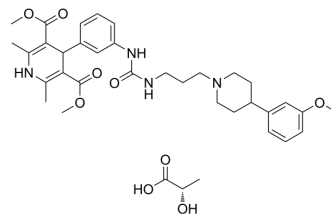


## BMS-193885 L-Lactic acid

Cat. No.:	HY-107727
CAS No.:	679839-66-8
Molecular Formula:	C <sub>36</sub> H <sub>48</sub> N <sub>4</sub> O <sub>9</sub>
Molecular Weight:	680.79
Target:	Neuropeptide Y Receptor
Pathway:	GPCR/G Protein; Neuronal Signaling
Storage:	Please store the product under the recommended conditions in the Certificate of Analysis.



### BIOLOGICAL ACTIVITY

#### Description

BMS-193885 (L-Lactic acid) is a potent, selective, and brain-penetrant neuropeptide Y1 receptor antagonist. BMS-193885 has a  $K_i$  value of 3.3 nM for the neuropeptide Y1 receptor, competitively acts on the neuropeptide Y binding site, and can reduce food intake and body weight through central Y1 inhibition<sup>[1]</sup>.

### REFERENCES

[1]. Ildiko Antal-Zimanyi, et al. Pharmacological characterization and appetite suppressive properties of BMS-193885, a novel and selective neuropeptide Y(1) receptor antagonist. *Eur J Pharmacol.* 2008 Aug 20;590(1-3):224-32.

**Caution: Product has not been fully validated for medical applications. For research use only.**

Tel: 609-228-6898

Fax: 609-228-5909

E-mail: tech@MedChemExpress.com

Address: 1 Deer Park Dr, Suite Q, Monmouth Junction, NJ 08852, USA