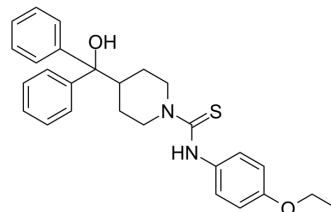


SF 11

Cat. No.:	HY-107731
CAS No.:	443292-81-7
Molecular Formula:	C ₂₇ H ₃₀ N ₂ O ₂ S
Molecular Weight:	446.6
Target:	Neuropeptide Y Receptor
Pathway:	GPCR/G Protein; Neuronal Signaling
Storage:	Please store the product under the recommended conditions in the Certificate of Analysis.



BIOLOGICAL ACTIVITY

Description	SF 11 is a potent and brain penetrant neuropeptide Y ₂ receptor antagonist (IC ₅₀ =199 nM). Antidepressant-like activity ^{[1][2]} .
IC ₅₀ & Target	NPYY ₂ receptor 199 nM (IC ₅₀)

REFERENCES

- [1]. Domin H, et al. Characterization of the Brain Penetrant Neuropeptide Y₂ Receptor Antagonist SF-11. ACS Chem Neurosci. 2019;10(8):3454-3463.
- [2]. Brothers SP, et al. Selective and brain penetrant neuropeptide y₂ receptor antagonists discovered by whole-cell high-throughput screening. Mol Pharmacol. 2010;77(1):46-57.

Caution: Product has not been fully validated for medical applications. For research use only.

Tel: 609-228-6898

Fax: 609-228-5909

E-mail: tech@MedChemExpress.com

Address: 1 Deer Park Dr, Suite Q, Monmouth Junction, NJ 08852, USA