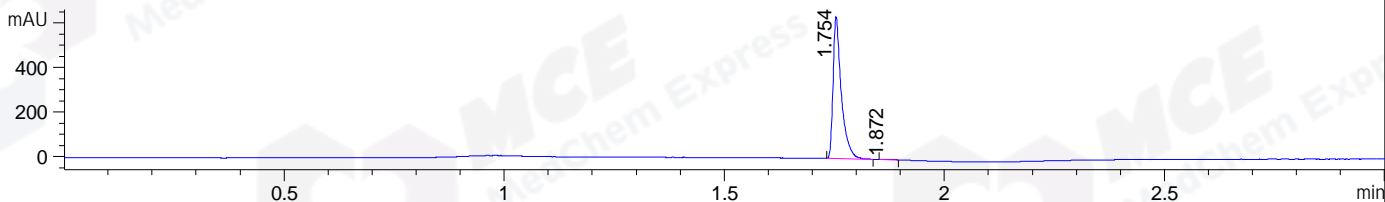
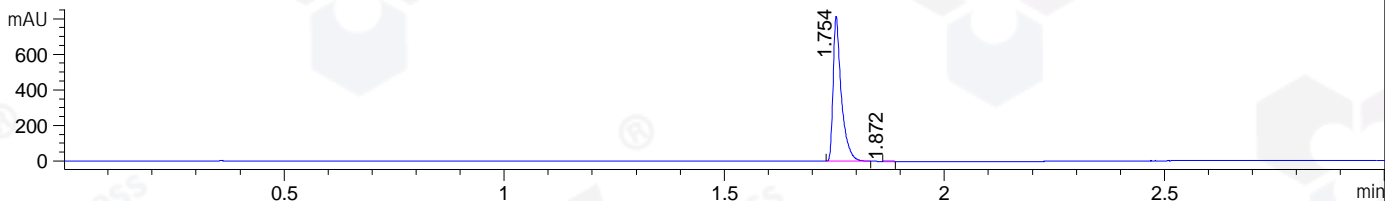


File ..\DATA\2019\20190909\713\BIZ2019-906-WMX8-.D Tgt Mass (CHM):
 Injection Date : 10 Sep 19 9:43 am +0800 Seq. Line : 9
 Sample Name : BIZ2019-906-WMX8 Location : P2-B-01
 Acq. Operator : bgd_1571 Inj : 1
 Spec. Reported : MS Integration Inj Volume : 0.7 ul
 Acq. Method : D:\Chem32\1\data\2019\20190909\713\1-POS-3MIN.M
 Analysis Method : D:\CHEM32\1\DATA\2019\20190909\713\1-POS-3MIN.M
 Catalog No : HY-107818 Batch#46020
 Method Info : Mobile Phase: A: water(0.01%TFA) B:ACN(0.01%TFA)
 Gradient: 5% to 95%B within 1.3 min
 Flow Rate :1.8ml/min
 Column :SunFire C18, 4.6*50mm,3.5um A-RP-433
 Oven Temperature : 45

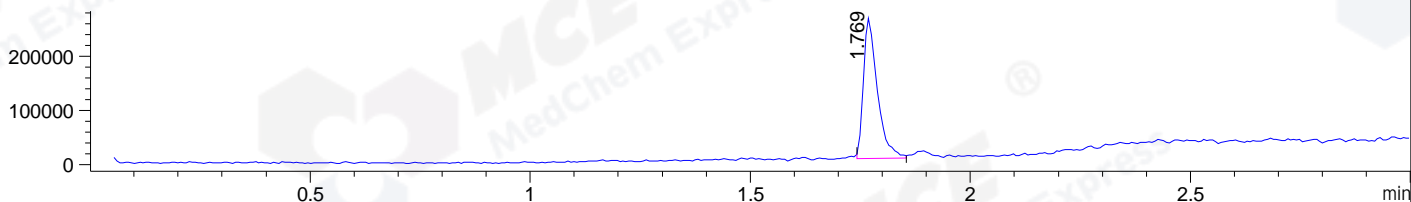
DAD1 B, Sig=214,4 Ref=off



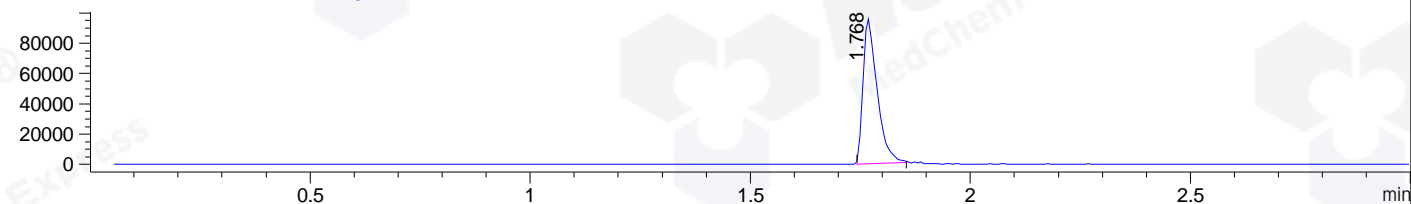
DAD1 C, Sig=254,4 Ref=off



MSD1 TIC, MS File ES-API, Pos, Scan, Frag: 70



Ion 225.08, MSD1 225.08, Target Mass 224.08 +H Positive, EIC=224.78:225.78



Integration Results for DAD1 B, Sig=214,4 Ref=off

RetTim	Width	Area	Height	Area%	MS (+)
1.75	0.02	826.60	638.34	99.68	225
1.87	0.02	2.65	1.88	0.32	141

Integration Results for DAD1 C, Sig=254,4 Ref=off

RetTim	Width	Area	Height	Area%	MS (+)
1.75	0.02	1053.56	816.31	99.75	225
1.87	0.02	2.68	2.27	0.25	141

Integration Results for MSD1 TIC, MS File

RetTim	Width	Area	Height	Area%	MS (+)
1.77	0.03	569562.63	259050.33	100.00	225

Ret. Time: 1.77

<<<< POSITIVE SPECTRA >>>>

ES-API Positive

