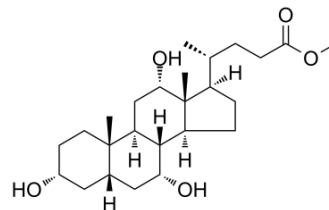


Methyl cholate

Cat. No.:	HY-107830		
CAS No.:	1448-36-8		
Molecular Formula:	C ₂₅ H ₄₂ O ₅		
Molecular Weight:	422.6		
Target:	Others		
Pathway:	Others		
Storage:	Powder	-20°C	3 years
		4°C	2 years
	In solvent	-80°C	6 months
		-20°C	1 month



SOLVENT & SOLUBILITY

In Vivo

- Add each solvent one by one: **10% DMSO >> 40% PEG300 >> 5% Tween-80 >> 45% saline**
Solubility: ≥ 2.17 mg/mL (5.13 mM); Clear solution
- Add each solvent one by one: **10% DMSO >> 90% (20% SBE-β-CD in saline)**
Solubility: ≥ 2.17 mg/mL (5.13 mM); Clear solution
- Add each solvent one by one: **10% DMSO >> 90% corn oil**
Solubility: ≥ 2.17 mg/mL (5.13 mM); Clear solution

BIOLOGICAL ACTIVITY

Description

Methyl Cholate is methyl ester form of Cholic acid. Cholic acid is one of the major bile acids produced by the liver, where it is synthesized from cholesterol^[1].

REFERENCES

[1]. L J Bennion, et al. Effects of Oral Contraceptives on the Gallbladder Bile of Normal Women. N Engl J Med, 294 (4), 189-92 1976 Jan 22

Caution: Product has not been fully validated for medical applications. For research use only.

Tel: 609-228-6898

Fax: 609-228-5909

E-mail: tech@MedChemExpress.com

Address: 1 Deer Park Dr, Suite Q, Monmouth Junction, NJ 08852, USA