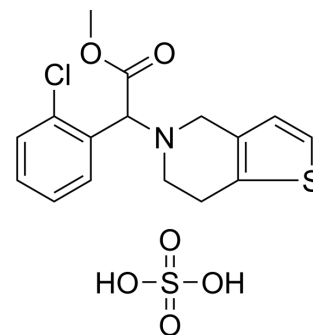


## (±)-Clopidogrel bisulfate

Cat. No.:	HY-107867
CAS No.:	135046-48-9
Molecular Formula:	C <sub>16</sub> H <sub>18</sub> ClNO <sub>6</sub> S <sub>2</sub>
Molecular Weight:	419.9
Target:	Others
Pathway:	Others
Storage:	4°C, sealed storage, away from moisture * In solvent : -80°C, 6 months; -20°C, 1 month (sealed storage, away from moisture)



### BIOLOGICAL ACTIVITY

#### Description

Clopidogrel sulfate is an antiplatelet agent. Specifically, Clopidogrel sulfate inhibits the binding of ADP to its receptors on the membranes of platelet cells, and blocks ADP-mediated activation of the glycoprotein GPIIb/IIIa complex. Clopidogrel sulfate can be used for research of heart disease and stroke<sup>[1]</sup>.

### REFERENCES

[1]. Pindelska E, et al. Solid-state NMR as an effective method of polymorphic analysis: solid dosage forms of clopidogrel hydrogensulfate. J Pharm Sci. 2015 Jan;104(1):106-13.

**Caution: Product has not been fully validated for medical applications. For research use only.**

Tel: 609-228-6898

Fax: 609-228-5909

E-mail: tech@MedChemExpress.com

Address: 1 Deer Park Dr, Suite Q, Monmouth Junction, NJ 08852, USA