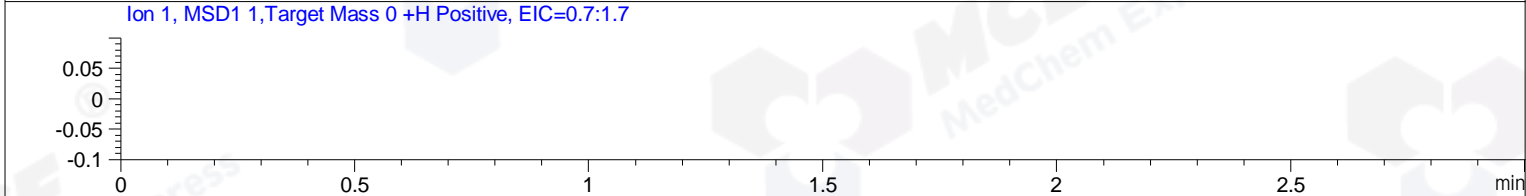
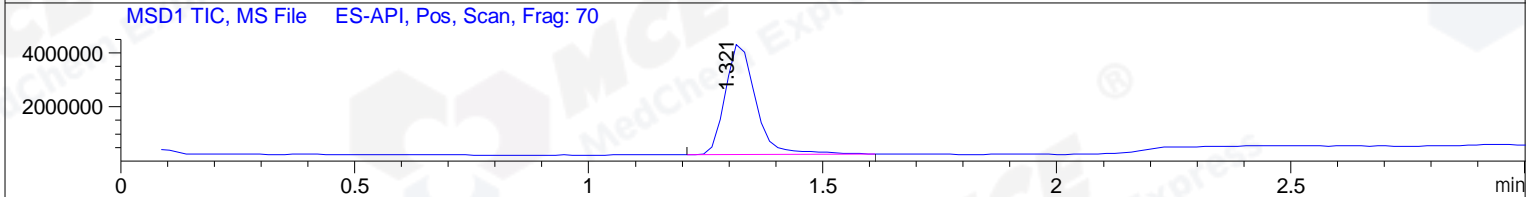
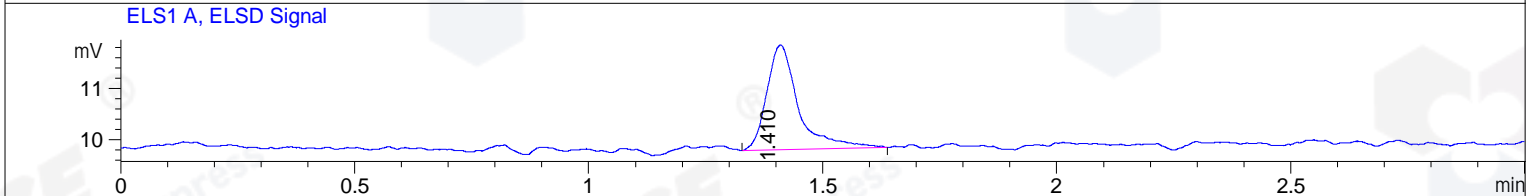
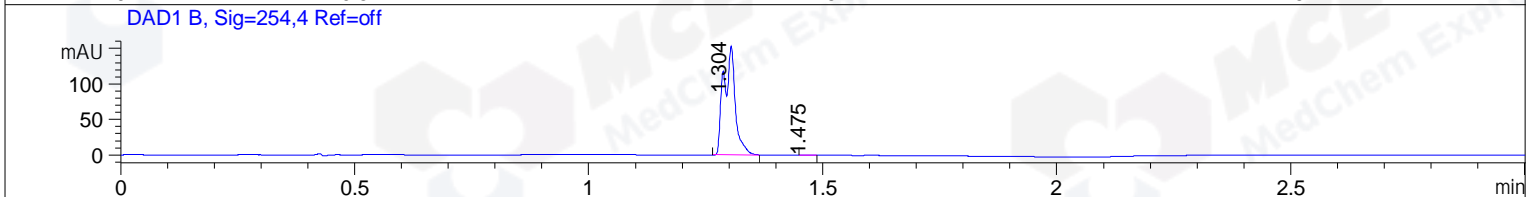
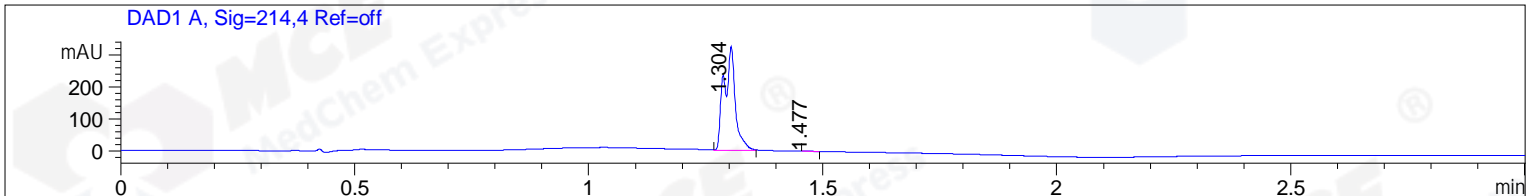


File ..3\Data\20190507\20190507\BIZ2019-507-WYQ4.D Tgt Mass (CHM):  
 Injection Date : 7 May 19 4:20 pm +0800 Seq. Line : 87  
 Sample Name : BIZ2019-507-WYQ4 Location : P2-B-09  
 Acq. Operator : SYSTEM Inj : 1  
 Spec. Reported : MS Integration Inj Volume : 1 ul  
 Acq. Method : D:\LCMS03\Data\20190507\20190507\1-POS-3MIN.M  
 Analysis Method : D:\LCMS03\Data\20190507\20190507\1-POS-3MIN.M  
 Catalog No : HY-10792A Batch#40998  
 Method Info : Mobile Phase: A: water(0.01%TFA) B:ACN(0.01%TFA)  
 Gradient: 5% to 95%B within 1.3 min  
 Flow Rate :1.8ml/min  
 Column :SunFire C18, 4.6\*50mm,3.5um A-RP-392  
 Oven Temperature : 45C



Integration Results for DAD1 A, Sig=214,4 Ref=off

RetTim	Width	Area	Height	Area%	MS (+)
1.30	0.03	541.14	323.97	99.95	329
1.48	0.02	0.29	0.24	0.05	114

Integration Results for DAD1 B, Sig=254,4 Ref=off

RetTim	Width	Area	Height	Area%	MS (+)
1.30	0.03	260.78	153.07	99.95	329
1.47	0.01	0.14	0.13	0.05	114

Integration Results for ELS1 A, ELSD Signal

RetTim	Width	Area	Height	Area%	MS (+)
1.41	0.07	9.69	2.05	100.00	329

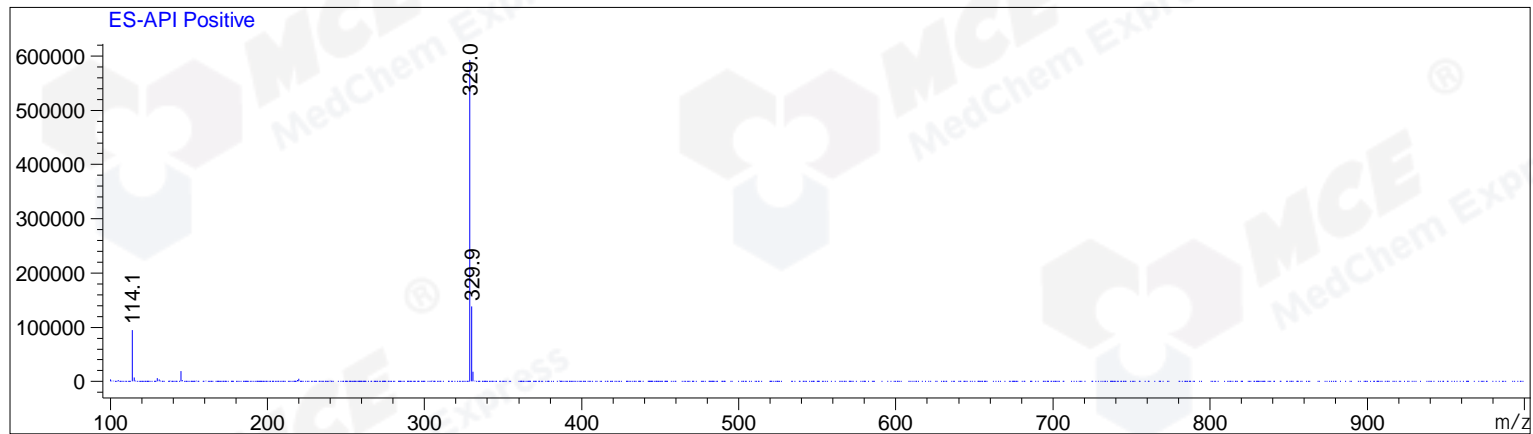
Integration Results for MSD1 TIC, MS File

1.32      0.07      18410184.00      4130553.75      100.00      329

RetTim	Width	Area	Height	Area%	MS (+)
--------	-------	------	--------	-------	--------

Ret. Time: 1.32

<<<< POSITIVE SPECTRA >>>>



\*\*\* End of Report \*\*\*