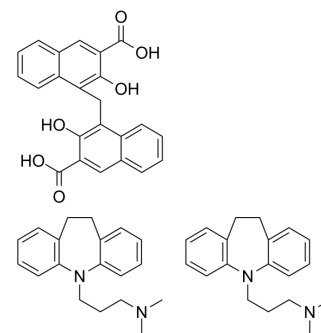


Imipramine pamoate

Cat. No.:	HY-107956
CAS No.:	10075-24-8
Molecular Formula:	C ₆₁ H ₆₄ N ₄ O ₆
Molecular Weight:	949.18
Target:	Others
Pathway:	Others
Storage:	Please store the product under the recommended conditions in the Certificate of Analysis.



BIOLOGICAL ACTIVITY

Description	Imipramine pamoate is a potent anti-depressant compound ^{[1][2]} .
--------------------	---

REFERENCES

- [1]. Doyle LN. Imipramine pamoate in depression. *Psychosomatics*. 1975;16(3):129-31.
- [2]. Goldberg HL, et al. Which tricyclic for depressed outpatients, imipramine pamoate or amitriptyline? *Dis Nerv Syst*. 1977 Oct;38(10):785-9.

Caution: Product has not been fully validated for medical applications. For research use only.

Tel: 609-228-6898

Fax: 609-228-5909

E-mail: tech@MedChemExpress.com

Address: 1 Deer Park Dr, Suite Q, Monmouth Junction, NJ 08852, USA