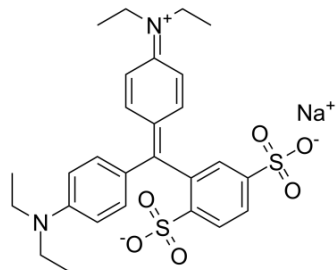


## Isosulfan blue

Cat. No.:	HY-107967		
CAS No.:	68238-36-8		
Molecular Formula:	C <sub>27</sub> H <sub>31</sub> N <sub>2</sub> NaO <sub>6</sub> S <sub>2</sub>		
Molecular Weight:	566.66		
Target:	Others		
Pathway:	Others		
Storage:	Powder	-20°C	3 years
		4°C	2 years
	In solvent	-80°C	6 months
		-20°C	1 month



### SOLVENT & SOLUBILITY

#### In Vitro

DMSO : 83.33 mg/mL (147.05 mM; Need ultrasonic)

Preparing Stock Solutions	Solvent Concentration	Mass		
		1 mg	5 mg	10 mg
	1 mM	1.7647 mL	8.8236 mL	17.6473 mL
	5 mM	0.3529 mL	1.7647 mL	3.5295 mL
	10 mM	0.1765 mL	0.8824 mL	1.7647 mL

Please refer to the solubility information to select the appropriate solvent.

#### In Vivo

- Add each solvent one by one: 10% DMSO >> 40% PEG300 >> 5% Tween-80 >> 45% saline  
Solubility: ≥ 2.08 mg/mL (3.67 mM); Clear solution
- Add each solvent one by one: 10% DMSO >> 90% (20% SBE-β-CD in saline)  
Solubility: ≥ 2.08 mg/mL (3.67 mM); Clear solution

### BIOLOGICAL ACTIVITY

#### Description

Isosulfan blue is a blue dye for the identification of lymph vessels during lymphangiography. Isosulfan blue is used during sentinel lymph node biopsies in breast cancer. Isosulfan blue is possible to have an allergic reaction during breast cancer operations<sup>[1][2]</sup>.

#### In Vitro

Isosulfan blue can rapidly uptake into lymph tissue with little diffusion to other surrounding tissues<sup>[1]</sup>. MCE has not independently confirmed the accuracy of these methods. They are for reference only.

### REFERENCES

---

[1]. Efron P, et al. Anaphylactic reaction to isosulfan blue used for sentinel node biopsy: case report and literature review. Breast J. 2002 Nov-Dec;8(6):396-9.

[2]. Laurie SA, et al. Anaphylaxis to isosulfan blue. Ann Allergy Asthma Immunol. 2002 Jan;88(1):64-6.

---

**Caution: Product has not been fully validated for medical applications. For research use only.**

Tel: 609-228-6898

Fax: 609-228-5909

E-mail: [tech@MedChemExpress.com](mailto:tech@MedChemExpress.com)

Address: 1 Deer Park Dr, Suite Q, Monmouth Junction, NJ 08852, USA