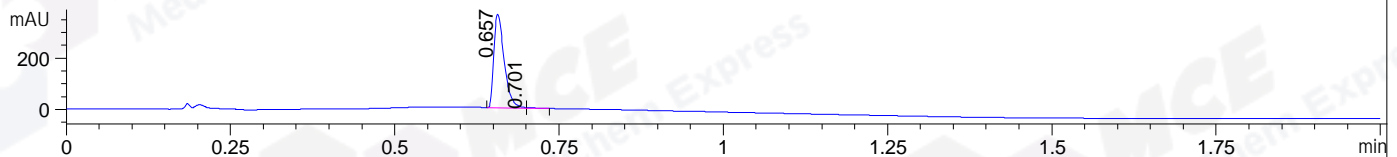
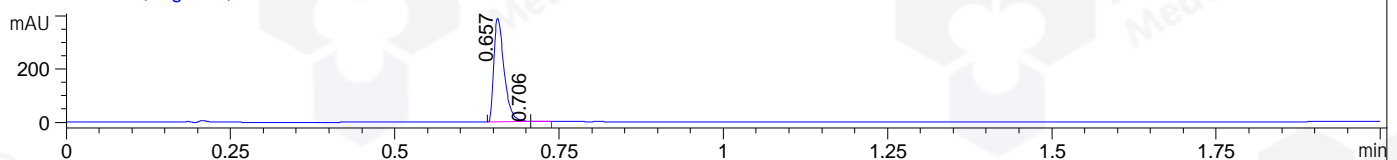


File ..3\Data\2021\20210202\WGY8960-005-1-001919.D Tgt Mass (CHM):  
Injection Date : 1 Feb 21 6:49 pm +0800 Seq. Line : 0  
Sample Name : WGY8960-005-1 Location : P2-E-10  
Acq. Operator : LXH\_1473 Inj : 1  
Spec. Reported : MS Integration Inj Volume : 0.3 ul  
Acq. Method : D:\LCMS\Methods\1-POS-UPLC2.0MIN(0.8ML)-(150-1000).M  
Analysis Method : D:\LCMS03\METHODS\1-POS-UPLC2.0MIN(0.8ML)-(150-1000).M  
CAS NO. : 153322-06-6 Walkup method: '1-POS-2MIN' Target:  
Method Info : Mobile Phase: A: water(0.01%TFA) B:ACN(0.01%TFA)  
Gradient: 5% to 95%B within 0.6 min  
Flow Rate : 0.8ml/min  
Column : Poroshell 120 EC- C18, 2.1\*50mm,1.9um A-RP-677  
Oven Temperature : 45C

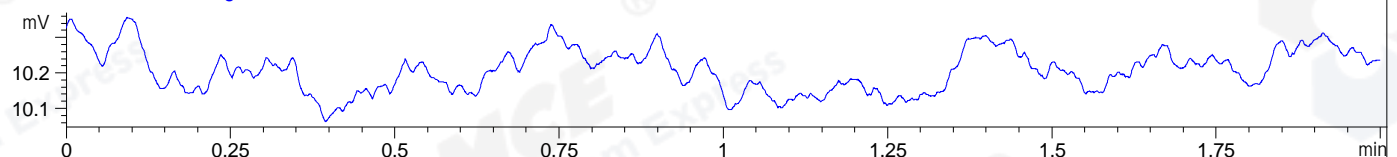
DAD1 A, Sig=214,4 Ref=off



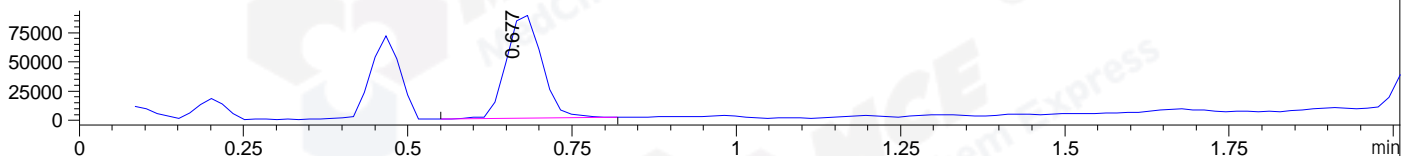
DAD1 B, Sig=254,4 Ref=off



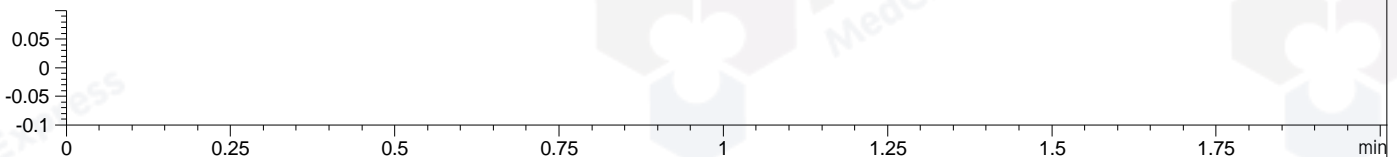
ELS1 A, ELSD Signal



MSD1 TIC, MS File ES-API, Pos, Scan, Frag: 70



Ion 1, MSD1 1, Target Mass 0 +H Positive, EIC=0.7:1.7



Integration Results for DAD1 A, Sig=214,4 Ref=off

| RetTim | Width | Area   | Height | Area% | MS (+) |
|--------|-------|--------|--------|-------|--------|
| 0.66   | 0.02  | 399.76 | 363.51 | 99.54 | 199    |
| 0.70   | 0.02  | 1.84   | 1.98   | 0.46  | 199    |

Integration Results for DAD1 B, Sig=254,4 Ref=off

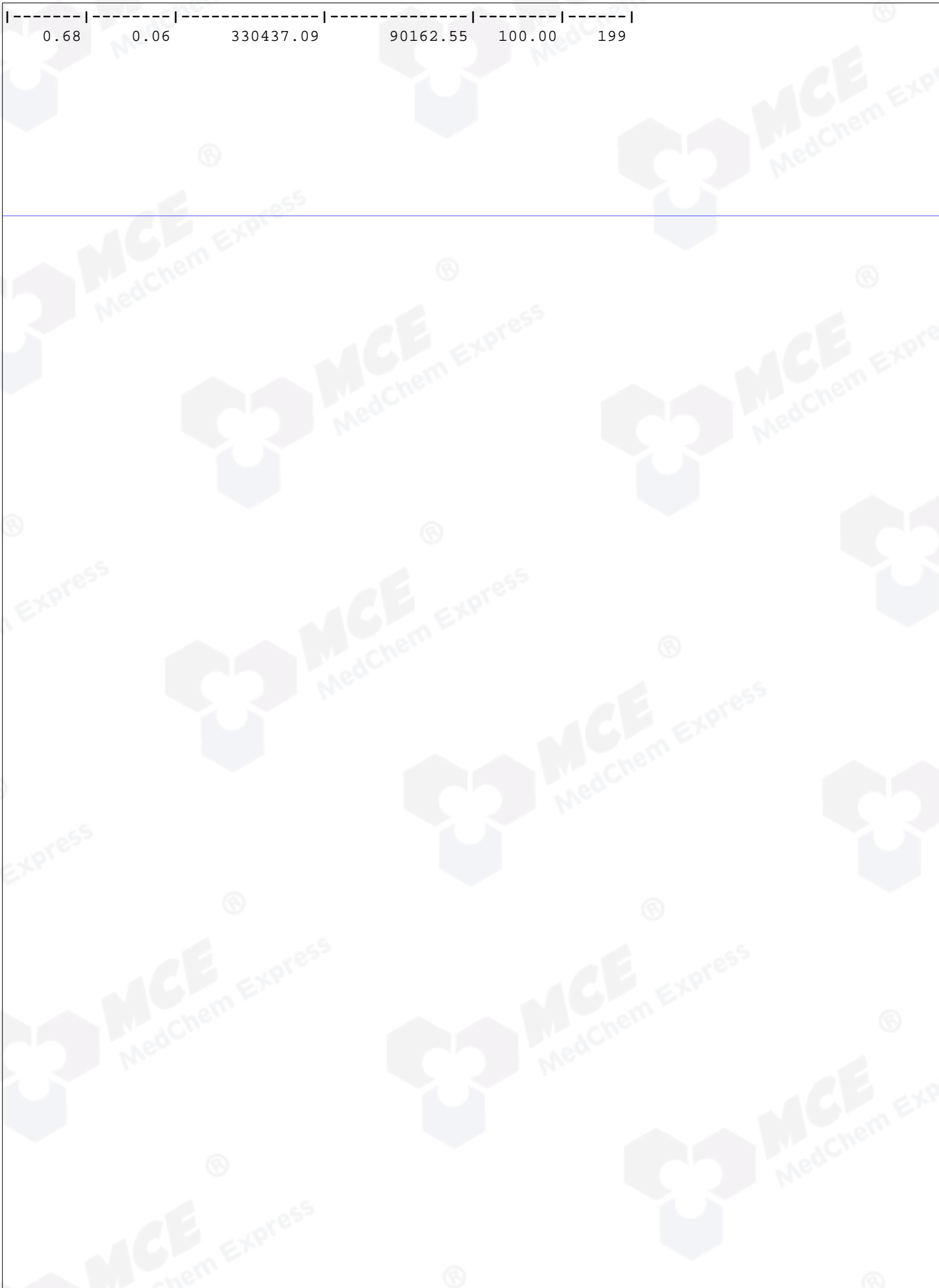
| RetTim | Width | Area   | Height | Area% | MS (+) |
|--------|-------|--------|--------|-------|--------|
| 0.66   | 0.02  | 421.54 | 389.12 | 99.77 | 199    |
| 0.71   | 0.01  | 0.97   | 1.18   | 0.23  | 199    |

Integration Results for ELS1 A, ELSD Signal

| RetTim | Width | Area | Height | Area% | MS (+) |
|--------|-------|------|--------|-------|--------|
|--------|-------|------|--------|-------|--------|

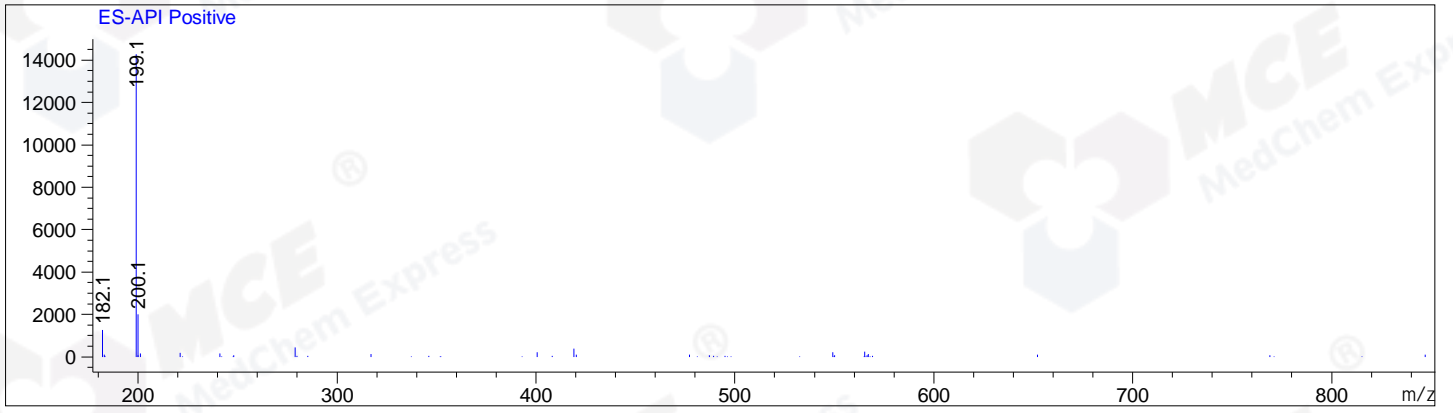
Integration Results for MSD1 TIC, MS File

| RetTim | Width | Area | Height | Area% | MS (+) |
|--------|-------|------|--------|-------|--------|
|--------|-------|------|--------|-------|--------|



Ret. Time: 0.68

<<<< POSITIVE SPECTRA >>>>



\*\*\* End of Report \*\*\*