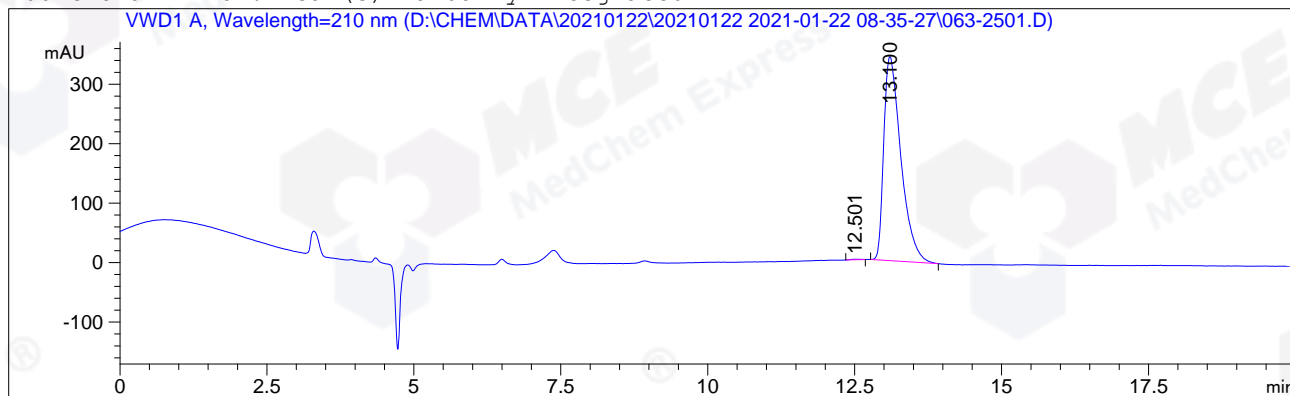


=====

Acq. Operator : cxw	Seq. Line : 25
Acq. Instrument : HPLC-04	Location : Vial 63
Injection Date : 1/22/2021 11:13:29 PM	Inj : 1
	Inj Volume : 5.0 µl
Acq. Method : D:\CHEM\DATA\20210122\20210122 2021-01-22 08-35-27\IC, 90B-ETOH, 210NM, C2.M	
Last changed : 12/22/2020 2:49:59 PM by cxw	
Analysis Method : D:\CHEM\METHODS\IC, 90B-ETOH, 210NM, C2.M	
Last changed : 1/25/2021 8:19:24 AM by cxw	
	(modified after loading)
CAS NO. : 153322-06-6	
	C-NP-38

Additional Info : Peak(s) manually integrated



=====
Area Percent Report
=====

Sorted By : Signal
Multiplier: : 1.0000
Dilution: : 1.0000
Use Multiplier & Dilution Factor with ISTDs

Signal 1: VWD1 A, Wavelength=210 nm

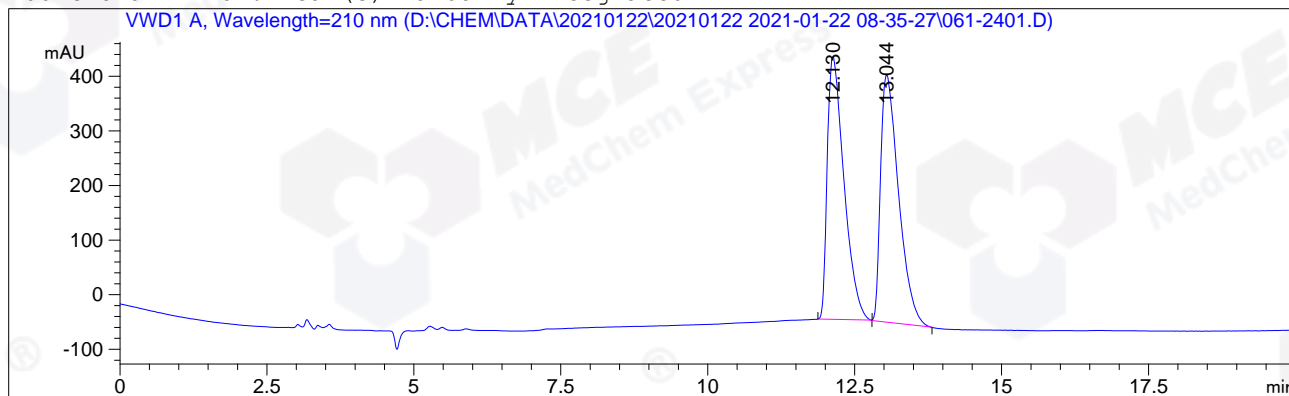
Peak #	RetTime [min]	Type	Width [min]	Area mAU *s	Height [mAU]	Area %
1	12.501	MM R	0.1816	9.68531	8.88848e-1	0.1394
2	13.100	MM R	0.3374	6940.18066	342.81372	99.8606

Totals : 6949.86597 343.70257

=====
*** End of Report ***

=====
 Acq. Operator : cxw Seq. Line : 24
 Acq. Instrument : HPLC-04 Location : Vial 61
 Injection Date : 1/22/2021 10:51:48 PM Inj : 1
 Inj Volume : 5.0 µl
 Acq. Method : D:\CHEM\DATA\20210122\20210122 2021-01-22 08-35-27\IC,90B-ETOH,210NM,C2.M
 Last changed : 12/22/2020 2:49:59 PM by cxw
 Analysis Method : D:\CHEM\METHODS\IC,90B-ETOH,210NM,C2.M
 Last changed : 1/25/2021 8:19:24 AM by cxw
 (modified after loading)
 CAS NO. : 153322-06-6
 C-NP-38

Additional Info : Peak(s) manually integrated



=====
 Area Percent Report
 =====

Sorted By : Signal
 Multiplier: : 1.0000
 Dilution: : 1.0000
 Use Multiplier & Dilution Factor with ISTDs

Signal 1: VWD1 A, Wavelength=210 nm

Peak #	RetTime [min]	Type	Width [min]	Area mAU*s	Height [mAU]	Area %
1	12.130	MM R	0.3297	9515.37402	480.98917	49.6626
2	13.044	MM R	0.3548	9644.66699	453.06808	50.3374

Totals : 1.91600e4 934.05725

=====
 *** End of Report ***