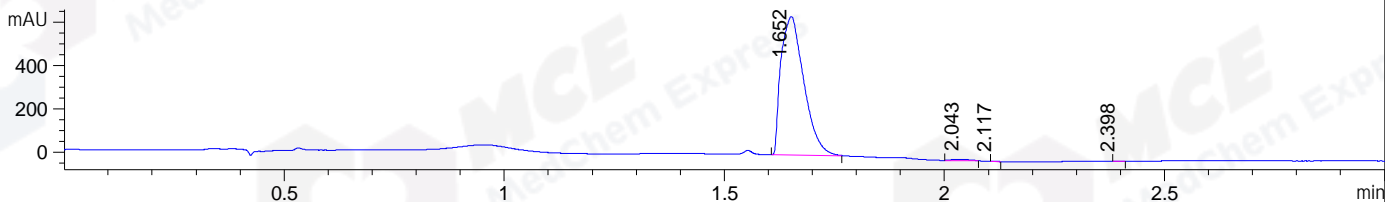
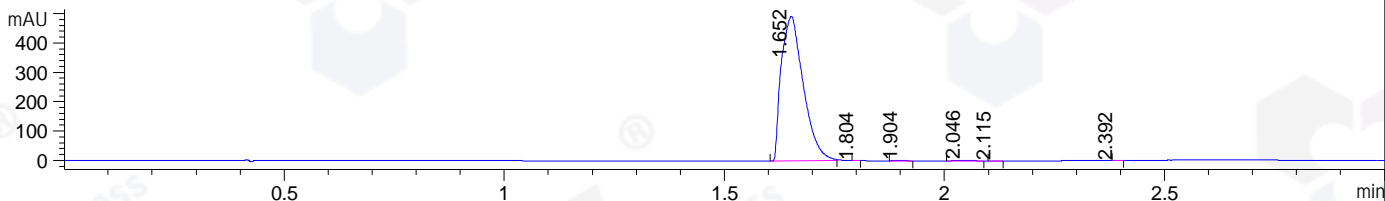


File ..DATA\2019\20190105\555\BIZ2019-104-CXL3-1.D Tgt Mass (CHM):
Injection Date : 5 Jan 19 5:29 pm +0800 Seq. Line : 43
Sample Name : BIZ2019-104-CXL3-1 Location : P2-B-03
Acq. Operator : LQ_1052 Inj : 1
Spec. Reported : MS Integration Inj Volume : 1 ul
Acq. Method : D:\Chem32\1\data\2019\20190105\555\1-POS-3MIN-1.M
Analysis Method : D:\CHEM32\1\DATA\2019\20190105\555\1-POS-3MIN-1.M
Catalog No : HY-108318 Batch#36507
Method Info : Mobile Phase: A: water(0.01%TFA) B:ACN(0.01%TFA)
Gradient: 5% to 95%B within 1.3 min
Flow Rate :1.8ml/min
Column :SunFire C18, 4.6*50mm,3.5um A-RP-314
Oven Temperature : 45

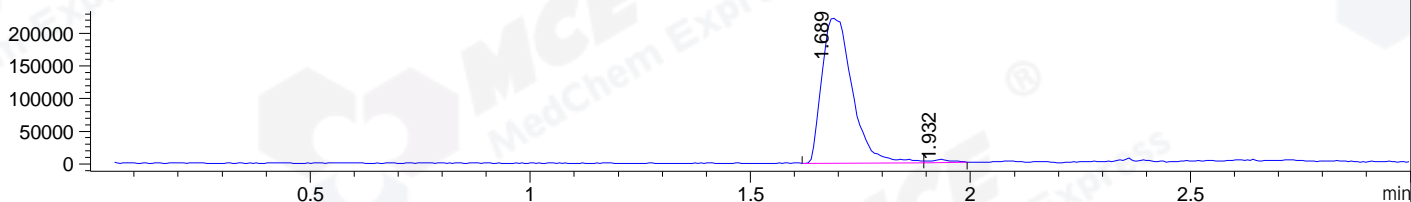
DAD1 B, Sig=214,4 Ref=off



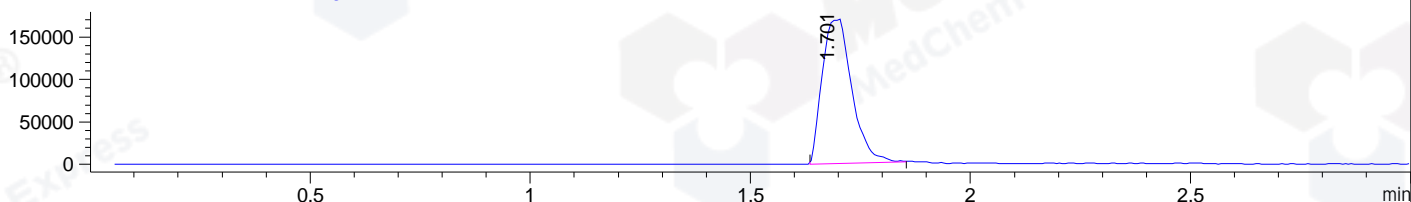
DAD1 C, Sig=254,4 Ref=off



MSD1 TIC, MS File ES-API, Pos, Scan, Frag: 70



Ion 371.2, MSD1 371.2, Target Mass 370.2 +H Positive, EIC=370.9:371.9



Integration Results for DAD1 B, Sig=214,4 Ref=off

RetTim	Width	Area	Height	Area%	MS (+)
1.65	0.05	2305.51	639.23	99.14	371
2.04	0.05	17.53	5.96	0.75	371
2.12	0.01	1.51	1.71	0.07	371
2.40	0.02	1.04	0.96	0.04	371

Integration Results for DAD1 C, Sig=254,4 Ref=off

RetTim	Width	Area	Height	Area%	MS (+)
1.65	0.05	1704.95	491.98	99.12	371
1.80	0.01	0.19	0.29	0.01	371
1.90	0.03	3.62	1.73	0.21	371
2.05	0.05	9.83	3.17	0.57	371
2.12	0.02	1.11	1.04	0.06	371
2.39	0.02	0.44	0.45	0.03	371

Integration Results for MSD1 TIC, MS File

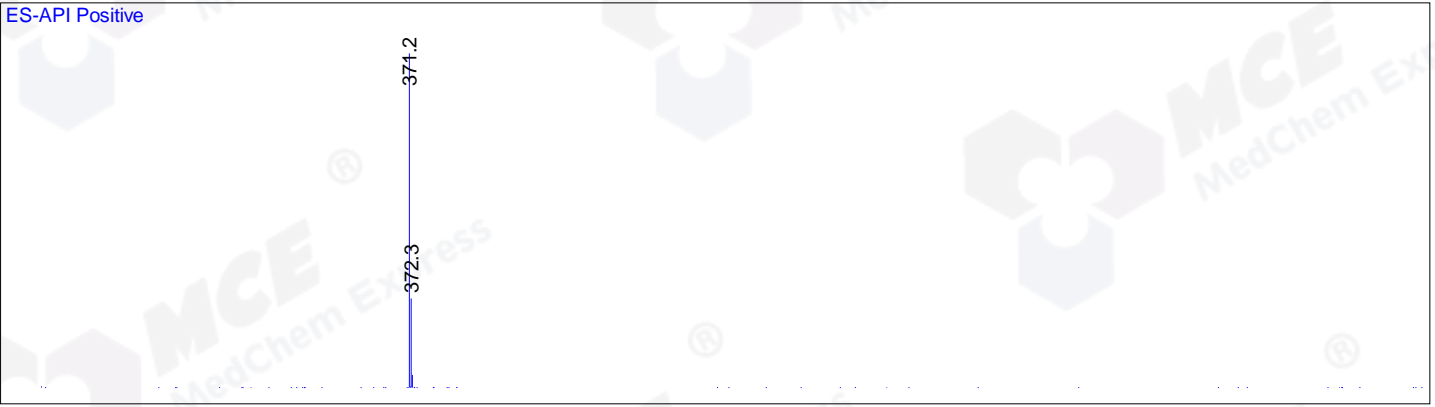
RetTim	Width	Area	Height	Area%	MS (+)
--------	-------	------	--------	-------	--------

1.69	0.07	1068724.50	222492.70	98.61	371
1.93	0.04	15063.51	4953.21	1.39	371

Ret. Time: 1.69

<<<< POSITIVE SPECTRA >>>>

ES-API Positive



Ret. Time: 1.93

ES-API Positive

