

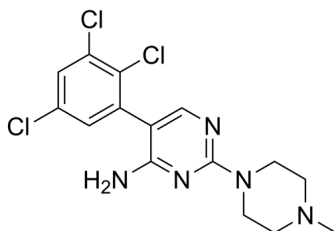
Sipatrigine

Cat. No.: HY-108335
Batch No.: 102790
CAS No.: 130800-90-7
Molecular Formula: C₁₅H₁₆Cl₃N₅

ANALYTICAL DATA

Theoretical: C(48.34%)、H(4.33%)、N(18.79%)
Result: C(48.39%)、H(4.31%)、N(18.79%)

Chemical Structure:



Caution: Product has not been fully validated for medical applications. For research use only.

Tel: 609-228-6898

Fax: 609-228-5909

E-mail: tech@MedChemExpress.com

Address: 1 Deer Park Dr, Suite Q, Monmouth Junction, NJ 08852, USA